

**Anti-Collagen 20 alpha 1 Antibody**  
**Catalog # AP53740****Specification**

---

**Anti-Collagen 20 alpha 1 Antibody - Product Information**

Application	WB, IF, IHC
Primary Accession	<a href="#">Q9P218</a>
Reactivity	Human
Host	Rabbit
Clonality	Polyclonal
Calculated MW	135830

**Anti-Collagen 20 alpha 1 Antibody - Additional Information****Gene ID** 57642**Other Names**

KIAA1510; Collagen alpha-1(XX) chain

**Target/Specificity**

Recognizes endogenous levels of Collagen 20 alpha 1 protein.

**Dilution**

WB~~1/500 - 1/1000

IF~~1/50 - 1/200

IHC~~1:100~500

**Format**

Liquid in 0.42% Potassium phosphate, 0.87% Sodium chloride, pH 7.3, 30% glycerol, and 0.09% (W/V) sodium azide.

**Storage**

Store at -20 °C.Stable for 12 months from date of receipt

**Anti-Collagen 20 alpha 1 Antibody - Protein Information****Name** COL20A1**Synonyms** KIAA1510**Function**

Probable collagen protein.

**Cellular Location**

Secreted, extracellular space.

**Tissue Location**

High expression in heart, lung, liver, skeletal muscle, kidney, pancreas, spleen, testis, ovary,

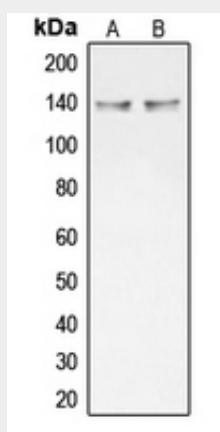
subthalamic nucleus and fetal liver. Weak expression in other tissues tested

### Anti-Collagen 20 alpha 1 Antibody - Protocols

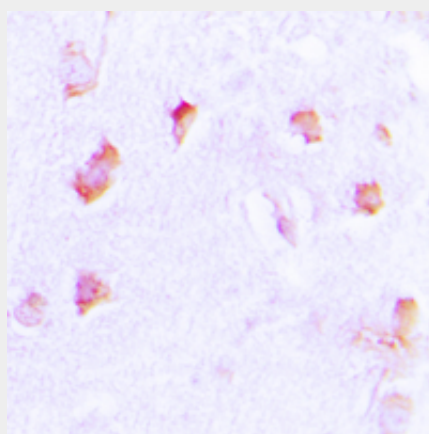
Provided below are standard protocols that you may find useful for product applications.

- [Western Blot](#)
- [Blocking Peptides](#)
- [Dot Blot](#)
- [Immunohistochemistry](#)
- [Immunofluorescence](#)
- [Immunoprecipitation](#)
- [Flow Cytometry](#)
- [Cell Culture](#)

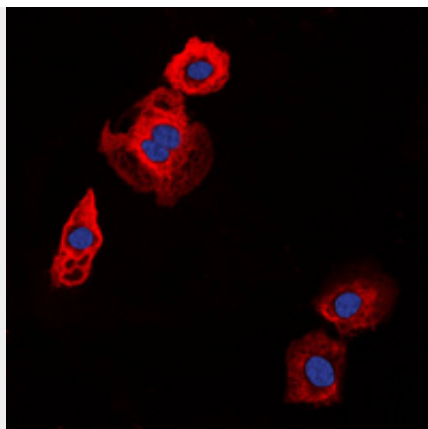
### Anti-Collagen 20 alpha 1 Antibody - Images



Western blot analysis of Collagen 20 alpha 1 expression in HT29 (A), NCIH292 (B) whole cell lysates.



Immunohistochemical analysis of Collagen 20 alpha 1 staining in human brain formalin fixed paraffin embedded tissue section. The section was pre-treated using heat mediated antigen retrieval with sodium citrate buffer (pH 6.0). The section was then incubated with the antibody at room temperature and detected using an HRP conjugated compact polymer system. DAB was used as the chromogen. The section was then counterstained with haematoxylin and mounted with DPX.



Immunofluorescent analysis of Collagen 20 alpha 1 staining in HT29 cells. Formalin-fixed cells were permeabilized with 0.1% Triton X-100 in TBS for 5-10 minutes and blocked with 3% BSA-PBS for 30 minutes at room temperature. Cells were probed with the primary antibody in 3% BSA-PBS and incubated overnight at 4 °C in a humidified chamber. Cells were washed with PBST and incubated with a DyLight 594-conjugated secondary antibody (red) in PBS at room temperature in the dark. DAPI was used to stain the cell nuclei (blue).

#### **Anti-Collagen 20 alpha 1 Antibody - Background**

Rabbit polyclonal antibody to Collagen 20 alpha 1