

Anti-RELT Antibody
Catalog # AP53747**Specification**

Anti-RELT Antibody - Product Information

Application	WB, IHC
Primary Accession	Q969Z4
Reactivity	Human, Mouse, Rat
Host	Rabbit
Clonality	Polyclonal
Calculated MW	46092

Anti-RELT Antibody - Additional Information**Gene ID** 84957**Other Names**

TNFRSF19L; Tumor necrosis factor receptor superfamily member 19L; Receptor expressed in lymphoid tissues

Target/Specificity

Recognizes endogenous levels of RELT protein.

Dilution

WB~~1/500 - 1/1000

IHC~~1:100~500

Format

Liquid in 0.42% Potassium phosphate, 0.87% Sodium chloride, pH 7.3, 30% glycerol, and 0.09% (W/V) sodium azide.

Storage

Store at -20 °C.Stable for 12 months from date of receipt

Anti-RELT Antibody - Protein Information**Name** RELT**Synonyms** TNFRSF19L**Function**

May play a role in apoptosis (PubMed:<[a href="http://www.uniprot.org/citations/19969290" target="_blank">19969290a href="http://www.uniprot.org/citations/28688764" target="_blank">28688764a href="http://www.uniprot.org/citations/16530727" target="_blank">16530727a href="http://www.uniprot.org/citations/30506946" target="_blank">30506946](http://www.uniprot.org/citations/19969290)

Cellular Location

Cell membrane; Single-pass type I membrane protein Cytoplasm. Cytoplasm, perinuclear region

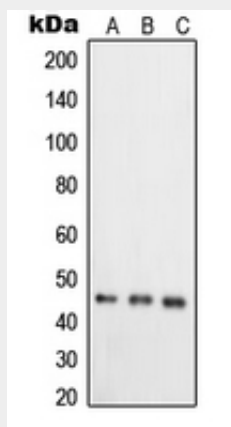
Tissue Location

Spleen, lymph node, brain, breast and peripheral blood leukocytes (at protein level) (PubMed:28688764). Expressed highly in bone marrow and fetal liver. Very low levels in skeletal muscle, testis and colon. Not detected in kidney and pancreas

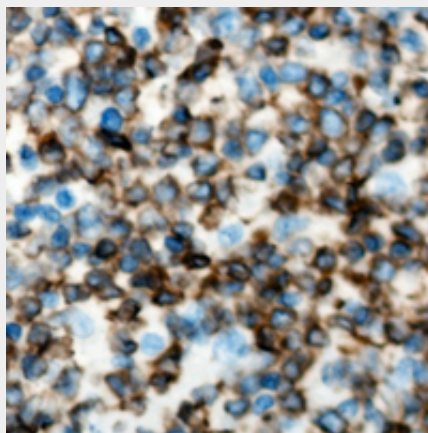
Anti-RELT Antibody - Protocols

Provided below are standard protocols that you may find useful for product applications.

- [Western Blot](#)
- [Blocking Peptides](#)
- [Dot Blot](#)
- [Immunohistochemistry](#)
- [Immunofluorescence](#)
- [Immunoprecipitation](#)
- [Flow Cytometry](#)
- [Cell Culture](#)

Anti-RELT Antibody - Images

Western blot analysis of RELT expression in HeLa (A), T47D (B), COLO205 (C) whole cell lysates.



Immunohistochemical analysis of RELT staining in human lymph node formalin fixed paraffin

embedded tissue section. The section was pre-treated using heat mediated antigen retrieval with sodium citrate buffer (pH 6.0). The section was then incubated with the antibody at room temperature and detected using an HRP conjugated compact polymer system. DAB was used as the chromogen. The section was then counterstained with haematoxylin and mounted with DPX.

Anti-RELT Antibody - Background

Rabbit polyclonal antibody to RELT