

Anti-PIK3R6 Antibody
Catalog # AP53751**Specification****Anti-PIK3R6 Antibody - Product Information**

Application	WB
Primary Accession	Q5UE93
Reactivity	Human, Mouse, Rat
Host	Rabbit
Clonality	Polyclonal
Calculated MW	84258

Anti-PIK3R6 Antibody - Additional Information**Gene ID** 146850**Other Names**

C17orf38; Phosphoinositide 3-kinase regulatory subunit 6; Phosphoinositide 3-kinase gamma adapter protein of 87 kDa; p84 PI3K adapter protein; p84 PIKAP; p87 PI3K adapter protein; p87PIKAP

Target/Specificity

Recognizes endogenous levels of PIK3R6 protein.

Dilution

WB~~1/500 - 1/1000

Format

Liquid in 0.42% Potassium phosphate, 0.87% Sodium chloride, pH 7.3, 30% glycerol, and 0.09% (W/V) sodium azide.

Storage

Store at -20 °C. Stable for 12 months from date of receipt

Anti-PIK3R6 Antibody - Protein Information**Name** PIK3R6**Synonyms** C17orf38**Function**

Regulatory subunit of the PI3K gamma complex. Acts as an adapter to drive activation of PIK3CG by beta-gamma G protein dimers. The PIK3CG:PIK3R6 heterodimer is much less sensitive to beta-gamma G protein dimers than PIK3CG:PIK3R5 and its membrane recruitment and beta-gamma G protein dimer-dependent activation requires HRAS bound to PIK3CG. Recruits of the PI3K gamma complex to a PDE3B:RAPGEF3 signaling complex involved in angiogenesis; signaling seems to involve RRAS.

Cellular Location

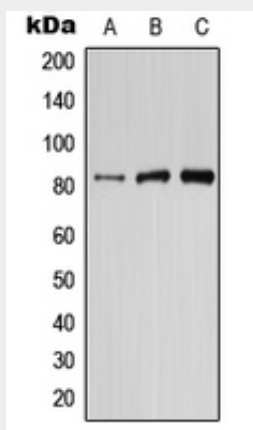
Cytoplasm {ECO:0000250|UniProtKB:Q3U6Q4}. Cell membrane {ECO:0000250|UniProtKB:Q3U6Q4}; Peripheral membrane protein {ECO:0000250|UniProtKB:Q3U6Q4}. Note=Translocated to the plasma membrane in a Ras-dependent manner. {ECO:0000250|UniProtKB:Q3U6Q4}

Anti-PIK3R6 Antibody - Protocols

Provided below are standard protocols that you may find useful for product applications.

- [Western Blot](#)
- [Blocking Peptides](#)
- [Dot Blot](#)
- [Immunohistochemistry](#)
- [Immunofluorescence](#)
- [Immunoprecipitation](#)
- [Flow Cytometry](#)
- [Cell Culture](#)

Anti-PIK3R6 Antibody - Images



Western blot analysis of PIK3R6 expression in HepG2 (A), mouse brain (B), rat brain (C) whole cell lysates.

Anti-PIK3R6 Antibody - Background

Rabbit polyclonal antibody to PIK3R6