

SIKE Antibody (C-term)
Affinity Purified Rabbit Polyclonal Antibody (Pab)
Catalog # AP5375b

Specification

SIKE Antibody (C-term) - Product Information

Application	IHC-P, WB,E
Primary Accession	Q9BRV8
Other Accession	Q5FWT9 , Q0VCF3 , NP_001095866.1 , NP_079349.2
Reactivity	Human
Predicted	Bovine, Rat
Host	Rabbit
Clonality	Polyclonal
Isotype	Rabbit IgG
Calculated MW	23721
Antigen Region	154-182

SIKE Antibody (C-term) - Additional Information

Gene ID 80143

Other Names

Suppressor of IKBKE 1, Suppressor of IKK-epsilon, SIKE1, SIKE

Target/Specificity

This SIKE antibody is generated from rabbits immunized with a KLH conjugated synthetic peptide between 154-182 amino acids from the C-terminal region of human SIKE.

Dilution

IHC-P~~1:50~100

WB~~1:1000

E~~Use at an assay dependent concentration.

Format

Purified polyclonal antibody supplied in PBS with 0.09% (W/V) sodium azide. This antibody is purified through a protein A column, followed by peptide affinity purification.

Storage

Maintain refrigerated at 2-8°C for up to 2 weeks. For long term storage store at -20°C in small aliquots to prevent freeze-thaw cycles.

Precautions

SIKE Antibody (C-term) is for research use only and not for use in diagnostic or therapeutic procedures.

SIKE Antibody (C-term) - Protein Information

Name SIKE1 ([HGNC:26119](#))

Synonyms SIKE

Function Physiological suppressor of IKK-epsilon and TBK1 that plays an inhibitory role in virus- and TLR3-triggered IRF3. Inhibits TLR3- mediated activation of interferon-stimulated response elements (ISRE) and the IFN-beta promoter. May act by disrupting the interactions of IKBKE or TBK1 with TICAM1/TRIF, IRF3 and RIGI. Does not inhibit NF- kappa-B activation pathways (PubMed:[16281057](#)). Associates with the striatin-interacting phosphatase and kinase (STRIPAK) core complex, forming the extended (SIKE1:SLMAP)STRIPAK complex (PubMed:[30622739](#)). The (SIKE1:SLMAP)STRIPAK complex dephosphorylates STK3 leading to the inhibition of Hippo signaling and the control of cell growth (PubMed:[30622739](#)).

Cellular Location

Cytoplasm.

Tissue Location

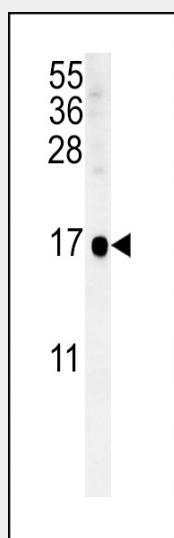
Widely expressed. Expressed in brain, heart, skeletal muscle, colon, thymus, spleen, kidney, liver, small intestine, placenta, lung and leukocytes. Present in all cell lines tested (at protein level).

SIKE Antibody (C-term) - Protocols

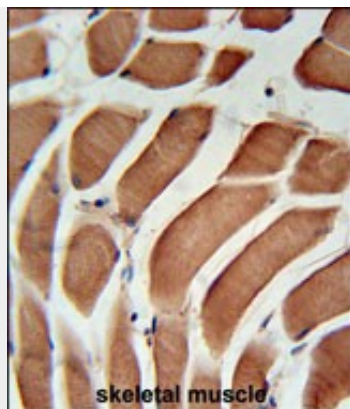
Provided below are standard protocols that you may find useful for product applications.

- [Western Blot](#)
- [Blocking Peptides](#)
- [Dot Blot](#)
- [Immunohistochemistry](#)
- [Immunofluorescence](#)
- [Immunoprecipitation](#)
- [Flow Cytometry](#)
- [Cell Culture](#)

SIKE Antibody (C-term) - Images



SIKE Antibody (C-term)(Cat. #AP5375b) western blot analysis in NCI-H292 cell line lysates (35ug/lane). This demonstrates the SIKE antibody detected the SIKE protein (arrow).



SIKE Antibody (C-term) (Cat. #AP5375b) immunohistochemistry analysis in formalin fixed and paraffin embedded human skeletal muscle followed by peroxidase conjugation of the secondary antibody and DAB staining. This data demonstrates the use of the SIKE Antibody (C-term) for immunohistochemistry. Clinical relevance has not been evaluated.

SIKE Antibody (C-term) - Background

SIKE interacts with IKK-epsilon (IKBKE; MIM 605048) and TBK1 (MIM 604834) and acts as a suppressor of TLR3 (MIM 603029) and virus-triggered interferon activation pathways (Huang et al., 2005 [PubMed 16281057]).

SIKE Antibody (C-term) - References

Goudreault, M., et al. Mol. Cell Proteomics 8(1):157-171(2009)
Huang, J., et al. EMBO J. 24(23):4018-4028(2005)