

**Anti-BRI3 Antibody**  
Catalog # AP53769**Specification**

---

**Anti-BRI3 Antibody - Product Information**

Application	<b>WB</b>
Primary Accession	<a href="#">O95415</a>
Reactivity	<b>Human, Mouse, Rat</b>
Host	<b>Rabbit</b>
Clonality	<b>Polyclonal</b>
Calculated MW	<b>13645</b>

**Anti-BRI3 Antibody - Additional Information****Gene ID** 25798**Other Names**

Brain protein I3; pRGR2

**Target/Specificity**

KLH-conjugated synthetic peptide encompassing a sequence within the N-term region of human BRI3. The exact sequence is proprietary.

**Dilution**

WB~~1/500 - 1/1000

**Format**

Liquid in 0.42% Potassium phosphate, 0.87% Sodium chloride, pH 7.3, 30% glycerol, and 0.09% (W/V) sodium azide.

**Storage**

Store at -20 °C. Stable for 12 months from date of receipt

**Anti-BRI3 Antibody - Protein Information****Name** BRI3**Function**

Participates in tumor necrosis factor-alpha (TNF)-induced cell death (PubMed:&lt;a href="http://www.uniprot.org/citations/14592447" target="\_blank"&gt;14592447&lt;/a&gt;). May be a target of Wnt/beta-catenin signaling in the liver (PubMed:&lt;a href="http://www.uniprot.org/citations/20538055" target="\_blank"&gt;20538055&lt;/a&gt;).

**Cellular Location**

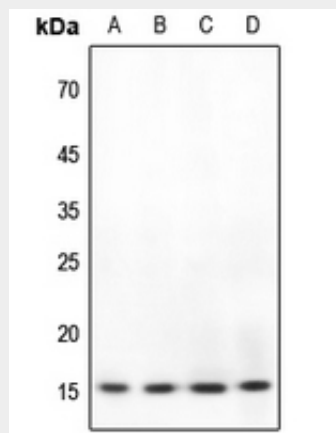
Lysosome membrane; Multi-pass membrane protein [Isoform 2]: Cytoplasm. Nucleus Note=Diffuse localization in the cytoplasm and nucleus

## Anti-BRI3 Antibody - Protocols

Provided below are standard protocols that you may find useful for product applications.

- [Western Blot](#)
- [Blocking Peptides](#)
- [Dot Blot](#)
- [Immunohistochemistry](#)
- [Immunofluorescence](#)
- [Immunoprecipitation](#)
- [Flow Cytometry](#)
- [Cell Culture](#)

## Anti-BRI3 Antibody - Images



Western blot analysis of BRI3 expression in HEK293T (A), HeLa (B), H446 (C), rat kidney (D) whole cell lysates.

## Anti-BRI3 Antibody - Background

Rabbit polyclonal antibody to BRI3