

PYHIN1 Antibody (N-term)
Affinity Purified Rabbit Polyclonal Antibody (Pab)
Catalog # AP5376a

Specification

PYHIN1 Antibody (N-term) - Product Information

Application	FC, IHC-P, WB,E
Primary Accession	Q6K0P9
Other Accession	Q16666 , NP_945146.1 , NP_945148.1
Reactivity	Human
Host	Rabbit
Clonality	Polyclonal
Isotype	Rabbit IgG
Calculated MW	55065
Antigen Region	26-55

PYHIN1 Antibody (N-term) - Additional Information

Gene ID 149628

Other Names

Pyrin and HIN domain-containing protein 1, Interferon-inducible protein X, PYHIN1, IFIX

Target/Specificity

This PYHIN1 antibody is generated from rabbits immunized with a KLH conjugated synthetic peptide between 26-55 amino acids from the N-terminal region of human PYHIN1.

Dilution

FC~~1:10~50

IHC-P~~1:50~100

WB~~1:1000

E~~Use at an assay dependent concentration.

Format

Purified polyclonal antibody supplied in PBS with 0.09% (W/V) sodium azide. This antibody is purified through a protein A column, followed by peptide affinity purification.

Storage

Maintain refrigerated at 2-8°C for up to 2 weeks. For long term storage store at -20°C in small aliquots to prevent freeze-thaw cycles.

Precautions

PYHIN1 Antibody (N-term) is for research use only and not for use in diagnostic or therapeutic procedures.

PYHIN1 Antibody (N-term) - Protein Information

Name PYHIN1

Synonyms IFIX

Function Major mediator of the tumor suppressor activity of IFN in breast cancer cells. Promotes ubiquitination and subsequent degradation of MDM2, which leads to p53/TP53 stabilization. Promotes ubiquitination and subsequent degradation of HDAC1, which in turn enhances maspin expression, and impairs invasive activity of cancer cells.

Cellular Location

[Isoform 1]: Nucleus, nucleoplasm. [Isoform 5]: Nucleus. Nucleus speckle.

Tissue Location

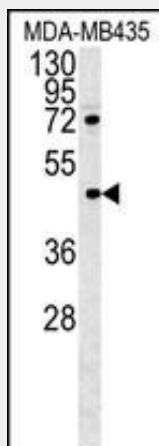
Expressed in spleen, lymph node and peripheral blood leukocytes, and at lower levels in thymus, bone marrow and fetal liver. Down-regulated in breast tumors.

PYHIN1 Antibody (N-term) - Protocols

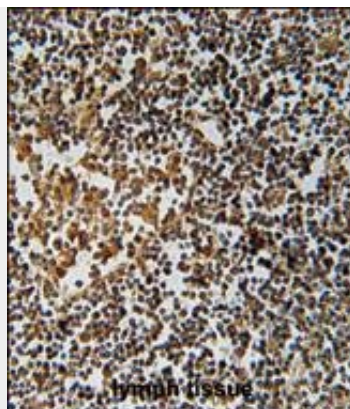
Provided below are standard protocols that you may find useful for product applications.

- [Western Blot](#)
- [Blocking Peptides](#)
- [Dot Blot](#)
- [Immunohistochemistry](#)
- [Immunofluorescence](#)
- [Immunoprecipitation](#)
- [Flow Cytometry](#)
- [Cell Culture](#)

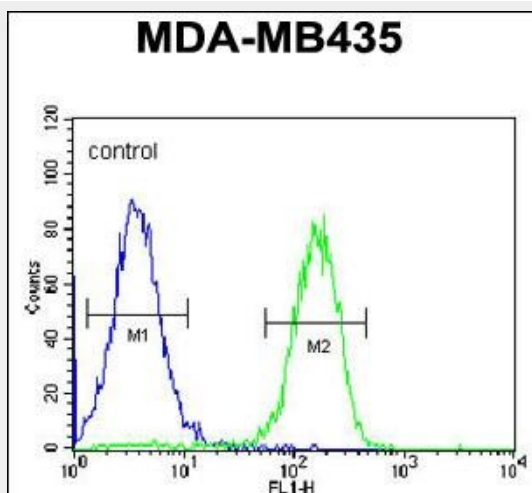
PYHIN1 Antibody (N-term) - Images



PYHIN1 Antibody (N-term)(Cat. #AP5376a) western blot analysis in MDA-MB435 cell line lysates (35ug/lane). This demonstrates the PYHIN1 antibody detected the PYHIN1 protein (arrow).



PYHIN1 Antibody (N-term) (Cat. #AP5376a) immunohistochemistry analysis in formalin fixed and paraffin embedded human lymph tissue followed by peroxidase conjugation of the secondary antibody and DAB staining. This data demonstrates the use of the PYHIN1 Antibody (N-term) for immunohistochemistry. Clinical relevance has not been evaluated.



PYHIN1 Antibody (N-term) (Cat. #AP5376a) flow cytometric analysis of MDA-MB435 cells (right histogram) compared to a negative control cell (left histogram). FITC-conjugated goat-anti-rabbit secondary antibodies were used for the analysis.

PYHIN1 Antibody (N-term) - Background

PYHIN1 belongs to the HIN200 family of interferon-inducible proteins that share a 200-amino acid signature motif at their C-terminal ends. HIN200 proteins are primarily nuclear and are involved in transcriptional regulation of genes important for cell cycle control, differentiation, and apoptosis (Ding et al., 2006 [PubMed 16479015]).

PYHIN1 Antibody (N-term) - References

Yamaguchi, H., et al. Mol. Carcinog. 47(10):739-743(2008)
Ding, Y., et al. Mol. Cell. Biol. 26(5):1979-1996(2006)
Ding, Y., et al. Oncogene 23(26):4556-4566(2004)