

Anti-RhoF Antibody
Catalog # AP53770**Specification**

Anti-RhoF Antibody - Product Information

Application	WB
Primary Accession	Q9HBH0
Reactivity	Human, Mouse, Rat
Host	Rabbit
Clonality	Polyclonal
Calculated MW	23625

Anti-RhoF Antibody - Additional Information**Gene ID** 54509**Other Names**

ARHF; RIF; Rho-related GTP-binding protein RhoF; Rho family GTPase Rif; Rho in filopodia

Target/Specificity

Recognizes endogenous levels of RhoF protein.

Dilution

WB~~1/500 - 1/1000

Format

Liquid in 0.42% Potassium phosphate, 0.87% Sodium chloride, pH 7.3, 30% glycerol, and 0.09% (W/V) sodium azide.

Storage

Store at -20 °C.Stable for 12 months from date of receipt

Anti-RhoF Antibody - Protein Information**Name** RHOF**Synonyms** ARHF, RIF**Function**

Plasma membrane-associated small GTPase which cycles between an active GTP-bound and an inactive GDP-bound state. Causes the formation of thin, actin-rich surface projections called filopodia. Functions cooperatively with CDC42 and Rac to generate additional structures, increasing the diversity of actin-based morphology.

Cellular Location

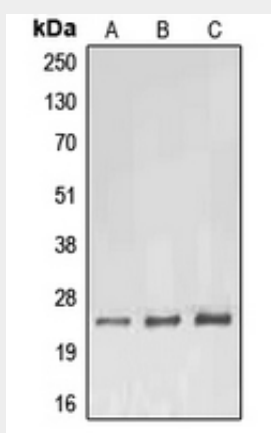
Cell membrane; Lipid-anchor; Cytoplasmic side. Cytoplasm, cytoskeleton

Anti-RhoF Antibody - Protocols

Provided below are standard protocols that you may find useful for product applications.

- [Western Blot](#)
- [Blocking Peptides](#)
- [Dot Blot](#)
- [Immunohistochemistry](#)
- [Immunofluorescence](#)
- [Immunoprecipitation](#)
- [Flow Cytometry](#)
- [Cell Culture](#)

Anti-RhoF Antibody - Images



Western blot analysis of RhoF expression in HeLa (A), Raw264.7 (B), H9C2 (C) whole cell lysates.

Anti-RhoF Antibody - Background

Rabbit polyclonal antibody to RhoF