

Anti-BET Antibody
Catalog # AP53775**Specification**

Anti-BET Antibody - Product Information

Application	WB
Primary Accession	Q8NFT8
Reactivity	Human, Mouse, Rat
Host	Rabbit
Clonality	Polyclonal
Calculated MW	78475

Anti-BET Antibody - Additional Information**Gene ID** 92737**Other Names**

BET; Delta and Notch-like epidermal growth factor-related receptor

Target/Specificity

Recognizes endogenous levels of BET protein.

Dilution

WB~~1/500 - 1/1000

Format

Liquid in 0.42% Potassium phosphate, 0.87% Sodium chloride, pH 7.3, 30% glycerol, and 0.09% (W/V) sodium azide.

Storage

Store at -20 °C.Stable for 12 months from date of receipt

Anti-BET Antibody - Protein Information**Name** DNER**Synonyms** BET**Function**

Activator of the NOTCH1 pathway. May mediate neuron-glia interaction during astrocytogenesis (By similarity).

Cellular Location

Cell membrane; Single-pass type I membrane protein. Note=Present on the membrane of dendrites and cell bodies but excluded from axonal membrane. Also found in early endosomes in the somatodendritic region (By similarity).

Tissue Location

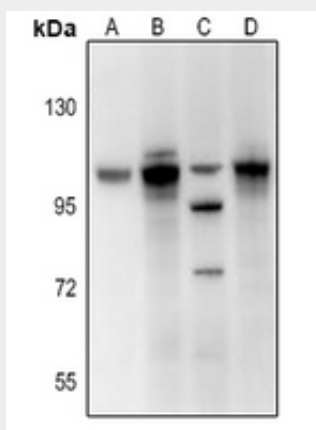
Expressed in brain, spinal cord and adrenal gland.

Anti-BET Antibody - Protocols

Provided below are standard protocols that you may find useful for product applications.

- [Western Blot](#)
- [Blocking Peptides](#)
- [Dot Blot](#)
- [Immunohistochemistry](#)
- [Immunofluorescence](#)
- [Immunoprecipitation](#)
- [Flow Cytometry](#)
- [Cell Culture](#)

Anti-BET Antibody - Images



Western blot analysis of BET expression in rat kidney (A), SP20 (B), C6 (C), SHSY5Y (D) whole cell lysates.

Anti-BET Antibody - Background

Rabbit polyclonal antibody to BET