

Anti-GAS8 Antibody
Catalog # AP53777**Specification**

Anti-GAS8 Antibody - Product Information

Application	WB, IHC
Primary Accession	O95995
Reactivity	Human, Mouse, Rat
Host	Rabbit
Clonality	Polyclonal
Calculated MW	56356

Anti-GAS8 Antibody - Additional Information**Gene ID** 2622**Other Names**

GAS11; Growth arrest-specific protein 8; GAS-8; Growth arrest-specific protein 11; GAS-11

Target/Specificity

Recognizes endogenous levels of GAS8 protein.

Dilution

WB~~1/500 - 1/1000

IHC~~1:100~500

Format

Liquid in 0.42% Potassium phosphate, 0.87% Sodium chloride, pH 7.3, 30% glycerol, and 0.09% (W/V) sodium azide.

Storage

Store at -20 °C.Stable for 12 months from date of receipt

Anti-GAS8 Antibody - Protein Information**Name** GAS8**Synonyms** DRC4 {ECO:0000303|PubMed:27120127}, GAS1**Function**

Component of the nexin-dynein regulatory complex (N-DRC), a key regulator of ciliary/flagellar motility which maintains the alignment and integrity of the distal axoneme and regulates microtubule sliding in motile axonemes. Plays an important role in the assembly of the N-DRC linker (By similarity). Plays dual roles at both the primary (or non-motile) cilia to regulate hedgehog signaling and in motile cilia to coordinate cilia movement. Required for proper motile cilia functioning (PubMed:26387594, PubMed:27120127, PubMed:27472056)

target="_blank">27472056). Positively regulates ciliary smoothened (SMO)-dependent Hedgehog (Hh) signaling pathway by facilitating the trafficking of SMO into the cilium and the stimulation of SMO activity in a GRK2-dependent manner (By similarity).

Cellular Location

Cytoplasm {ECO:0000250|UniProtKB:Q60779}. Cytoplasm, cytoskeleton. Cell projection, cilium, flagellum {ECO:0000250|UniProtKB:Q60779}. Cytoplasm, cytoskeleton, cilium axoneme. Cytoplasm, cytoskeleton, cilium basal body {ECO:0000250|UniProtKB:Q60779}. Golgi apparatus. Cell projection, cilium. Cytoplasm, cytoskeleton, flagellum axoneme {ECO:0000250|UniProtKB:Q7XJ96}. Note=Associates with microtubules (PubMed:10969087). Localized to the cytoplasm of round spermatids, the tails of elongating spermatids, and mature spermatid tail bundles protruding into the lumen, and in the flagellum of epididymal spermatozoa (By similarity). {ECO:0000250|UniProtKB:Q60779, ECO:0000269|PubMed:10969087}

Tissue Location

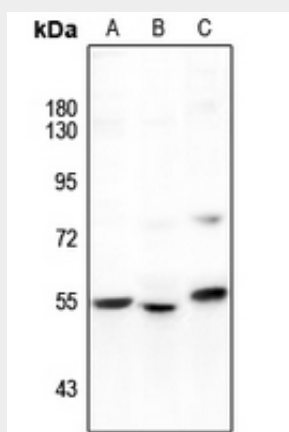
Expressed in respiratory epithelial cells (at protein level) (PubMed:26387594). Expressed in the heart, skeletal muscle, pancreas, liver, brain, trachea and lung. Weakly or not expressed in placenta and kidney (PubMed:9790751)

Anti-GAS8 Antibody - Protocols

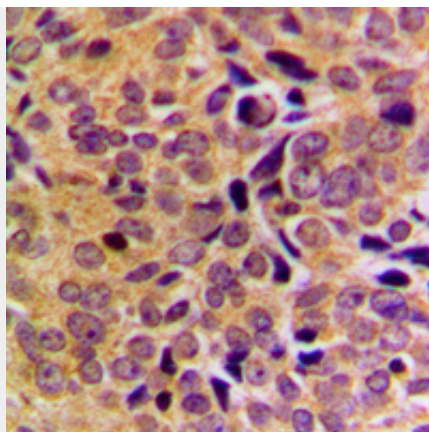
Provided below are standard protocols that you may find useful for product applications.

- [Western Blot](#)
- [Blocking Peptides](#)
- [Dot Blot](#)
- [Immunohistochemistry](#)
- [Immunofluorescence](#)
- [Immunoprecipitation](#)
- [Flow Cytometry](#)
- [Cell Culture](#)

Anti-GAS8 Antibody - Images



Western blot analysis of GAS8 expression in LO2 (A), mouse heart (B), rat heart (C) whole cell lysates.



Immunohistochemical analysis of GAS8 staining in human breast cancer formalin fixed paraffin embedded tissue section. The section was pre-treated using heat mediated antigen retrieval with sodium citrate buffer (pH 6.0). The section was then incubated with the antibody at room temperature and detected using an HRP conjugated compact polymer system. DAB was used as the chromogen. The section was then counterstained with haematoxylin and mounted with DPX.

Anti-GAS8 Antibody - Background

Rabbit polyclonal antibody to GAS8