

C102B Antibody (C-term)
Affinity Purified Rabbit Polyclonal Antibody (Pab)
Catalog # AP5377b**Specification**

C102B Antibody (C-term) - Product Information

| | |
|-------------------|-----------------------------|
| Application | WB, IHC-P, FC,E |
| Primary Accession | Q68D86 |
| Other Accession | NP_079057.2 |
| Reactivity | Human |
| Host | Rabbit |
| Clonality | Polyclonal |
| Isotype | Rabbit IgG |
| Calculated MW | 60448 |
| Antigen Region | 472-500 |

C102B Antibody (C-term) - Additional Information**Gene ID** 79839**Other Names**

Coiled-coil domain-containing protein 102B, CCDC102B, C18orf14

Target/Specificity

This C102B antibody is generated from rabbits immunized with a KLH conjugated synthetic peptide between 472-500 amino acids from the C-terminal region of human C102B.

Dilution

WB~~1:1000
IHC-P~~1:50~100
FC~~1:10~50

Format

Purified polyclonal antibody supplied in PBS with 0.09% (W/V) sodium azide. This antibody is purified through a protein A column, followed by peptide affinity purification.

Storage

Maintain refrigerated at 2-8°C for up to 2 weeks. For long term storage store at -20°C in small aliquots to prevent freeze-thaw cycles.

Precautions

C102B Antibody (C-term) is for research use only and not for use in diagnostic or therapeutic procedures.

C102B Antibody (C-term) - Protein Information**Name** CCDC102B

Synonyms C18orf14

Function During interphase, forms fibers at the proximal ends of centrioles to maintain centrosome cohesion (PubMed:[30404835](#)). During mitosis, dissociates from the centrosome following phosphorylation to allow centrosome separation (PubMed:[30404835](#)). Contributes to CROCC/rootletin filament formation (PubMed:[30404835](#)).

Cellular Location

Cytoplasm, cytoskeleton, microtubule organizing center, centrosome, centriole

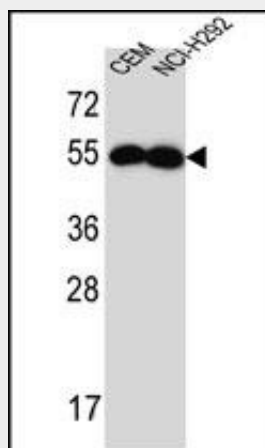
Note=Concentrated at the proximal ends of centrioles where it forms fibers (PubMed:30404835). Centrosomal localization becomes weak when cells enter prophase and is significantly decreased in metaphase (PubMed:30404835).

C102B Antibody (C-term) - Protocols

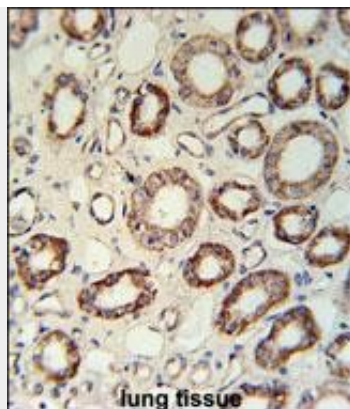
Provided below are standard protocols that you may find useful for product applications.

- [Western Blot](#)
- [Blocking Peptides](#)
- [Dot Blot](#)
- [Immunohistochemistry](#)
- [Immunofluorescence](#)
- [Immunoprecipitation](#)
- [Flow Cytometry](#)
- [Cell Culture](#)

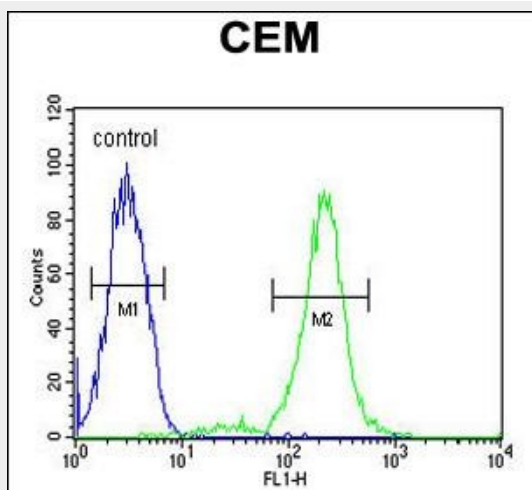
C102B Antibody (C-term) - Images



C102B Antibody (C-term)(Cat. #AP5377b) western blot analysis in CEM,NCI-H292 cell line lysates (35ug/lane).This demonstrates the C102B antibody detected the C102B protein (arrow).



C102B Antibody (C-term) (Cat. #AP5377b) immunohistochemistry analysis in formalin fixed and paraffin embedded human lung tissue followed by peroxidase conjugation of the secondary antibody and DAB staining. This data demonstrates the use of the C102B Antibody (C-term) for immunohistochemistry. Clinical relevance has not been evaluated.



C102B Antibody (C-term) (Cat. #AP5377b) flow cytometric analysis of CEM cells (right histogram) compared to a negative control cell (left histogram). FITC-conjugated goat-anti-rabbit secondary antibodies were used for the analysis.

C102B Antibody (C-term) - References

Miller, Y.E., et al. Genomics 8(1):149-154(1990)