

Anti-TLE2 Antibody
Catalog # AP53781**Specification**

Anti-TLE2 Antibody - Product Information

Application	WB, IH
Primary Accession	Q04725
Reactivity	Human
Host	Rabbit
Clonality	Polyclonal
Calculated MW	79841

Anti-TLE2 Antibody - Additional Information**Gene ID** 7089**Other Names**

Transducin-like enhancer protein 2; Enhancer of split groucho-like protein 2; ESG2

Target/Specificity

Recognizes endogenous levels of TLE2 protein.

Dilution

WB~~1/500 - 1/1000

IH~~1/50 - 1/200

Format

Liquid in 0.42% Potassium phosphate, 0.87% Sodium chloride, pH 7.3, 30% glycerol, and 0.09% (W/V) sodium azide.

Storage

Store at -20 °C.Stable for 12 months from date of receipt

Anti-TLE2 Antibody - Protein Information**Name** TLE2**Function**

Transcriptional corepressor that binds to a number of transcription factors. Inhibits the transcriptional activation mediated by CTNNB1 and TCF family members in Wnt signaling. The effects of full- length TLE family members may be modulated by association with dominant-negative AES (By similarity).

Cellular Location

Nucleus.

Tissue Location

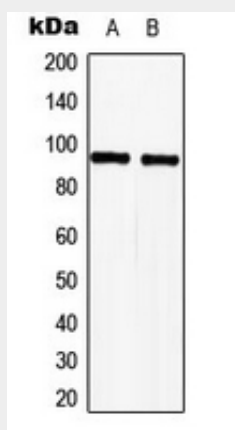
In all tissues examined, mostly in heart, brain, and muscle

Anti-TLE2 Antibody - Protocols

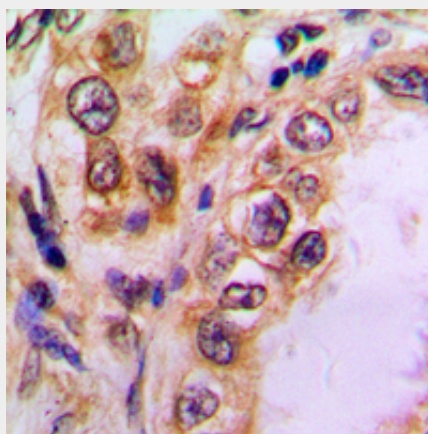
Provided below are standard protocols that you may find useful for product applications.

- [Western Blot](#)
- [Blocking Peptides](#)
- [Dot Blot](#)
- [Immunohistochemistry](#)
- [Immunofluorescence](#)
- [Immunoprecipitation](#)
- [Flow Cytometry](#)
- [Cell Culture](#)

Anti-TLE2 Antibody - Images



Western blot analysis of TLE2 expression in HeLa (A), Jurkat (B) whole cell lysates.



Immunohistochemical analysis of TLE2 staining in human lung cancer formalin fixed paraffin embedded tissue section. The section was pre-treated using heat mediated antigen retrieval with sodium citrate buffer (pH 6.0). The section was then incubated with the antibody at room temperature and detected using an HRP conjugated compact polymer system. DAB was used as the chromogen. The section was then counterstained with haematoxylin and mounted with DPX.

Anti-TLE2 Antibody - Background

Rabbit polyclonal antibody to TLE2