

**Anti-CK1 alpha Antibody**  
**Catalog # AP53794****Specification**

---

**Anti-CK1 alpha Antibody - Product Information**

Application	WB, IF
Primary Accession	<a href="#">Q8N752</a>
Other Accession	<a href="#">P48729</a>
Reactivity	Human, Mouse, Rat
Host	Rabbit
Clonality	Polyclonal
Calculated MW	39086

**Anti-CK1 alpha Antibody - Additional Information****Gene ID** 122011**Other Names**

CSNK1A1L; Casein kinase I isoform alpha-like; CKI-alpha-like; CK1; CSNK1A1; Casein kinase I isoform alpha; CKI-alpha; CK1

**Target/Specificity**

Recognizes endogenous levels of CK1 alpha protein.

**Dilution**

WB~~1/500 - 1/1000

IF~~1/50 - 1/200

**Format**

Liquid in 0.42% Potassium phosphate, 0.87% Sodium chloride, pH 7.3, 30% glycerol, and 0.09% (W/V) sodium azide.

**Storage**

Store at -20 °C.Stable for 12 months from date of receipt

**Anti-CK1 alpha Antibody - Protein Information****Name** CSNK1A1L**Function**

Casein kinases are operationally defined by their preferential utilization of acidic proteins such as caseins as substrates. It can phosphorylate a large number of proteins. Participates in Wnt signaling (By similarity).

**Cellular Location**

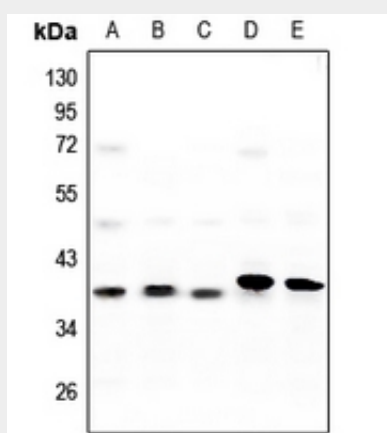
Cytoplasm.

## Anti-CK1 alpha Antibody - Protocols

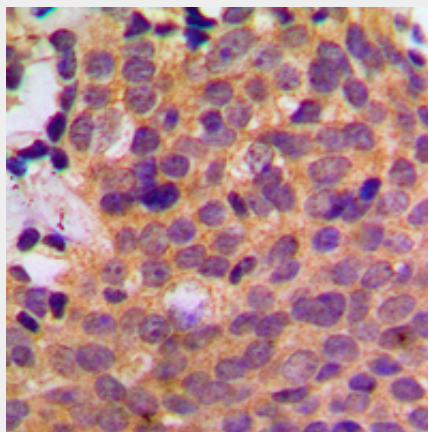
Provided below are standard protocols that you may find useful for product applications.

- [Western Blot](#)
- [Blocking Peptides](#)
- [Dot Blot](#)
- [Immunohistochemistry](#)
- [Immunofluorescence](#)
- [Immunoprecipitation](#)
- [Flow Cytometry](#)
- [Cell Culture](#)

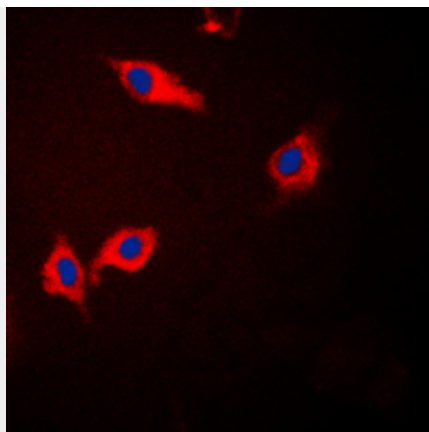
## Anti-CK1 alpha Antibody - Images



Western blot analysis of CK1 alpha expression in HEK293T (A), A375 (B), SGC7901 (C), mouse testis (D), rat testis (E) whole cell lysates.



Immunohistochemical analysis of CK1 alpha staining in human breast cancer formalin fixed paraffin embedded tissue section. The section was pre-treated using heat mediated antigen retrieval with sodium citrate buffer (pH 6.0). The section was then incubated with the antibody at room temperature and detected using an HRP conjugated compact polymer system. DAB was used as the chromogen. The section was then counterstained with haematoxylin and mounted with DPX.



Immunofluorescent analysis of CK1 alpha staining in Jurkat cells. Formalin-fixed cells were permeabilized with 0.1% Triton X-100 in TBS for 5-10 minutes and blocked with 3% BSA-PBS for 30 minutes at room temperature. Cells were probed with the primary antibody in 3% BSA-PBS and incubated overnight at 4 °C in a humidified chamber. Cells were washed with PBST and incubated with a DyLight 594-conjugated secondary antibody (red) in PBS at room temperature in the dark. DAPI was used to stain the cell nuclei (blue).

#### **Anti-CK1 alpha Antibody - Background**

Rabbit polyclonal antibody to CK1 alpha