

Anti-SP3/4 Antibody
Catalog # AP53798**Specification**

Anti-SP3/4 Antibody - Product Information

Application	WB, IF
Primary Accession	Q02447
Other Accession	Q02446
Reactivity	Human, Mouse
Host	Rabbit
Clonality	Polyclonal
Calculated MW	81925

Anti-SP3/4 Antibody - Additional Information**Gene ID** 6670**Other Names**

SP3; Transcription factor Sp3; SPR-2; SP4; Transcription factor Sp4; SPR-1

Target/Specificity

Recognizes endogenous levels of SP3/4 protein.

Dilution

WB~~1/500 - 1/1000

IF~~1/50 - 1/200

Format

Liquid in 0.42% Potassium phosphate, 0.87% Sodium chloride, pH 7.3, 30% glycerol, and 0.09% (W/V) sodium azide.

Storage

Store at -20 °C.Stable for 12 months from date of receipt

Anti-SP3/4 Antibody - Protein Information**Name** SP3**Function**

Transcriptional factor that can act as an activator or repressor depending on isoform and/or post-translational modifications. Binds to GT and GC boxes promoter elements. Competes with SP1 for the GC-box promoters. Weak activator of transcription but can activate a number of genes involved in different processes such as cell-cycle regulation, hormone-induction and house-keeping.

Cellular Location

Nucleus. Nucleus, PML body. Note=Localizes to the nuclear periphery and in nuclear dots when sumoylated. Some localization in PML nuclear bodies

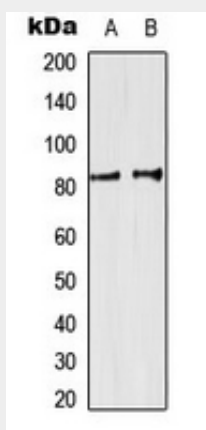
Tissue Location

Ubiquitously expressed.

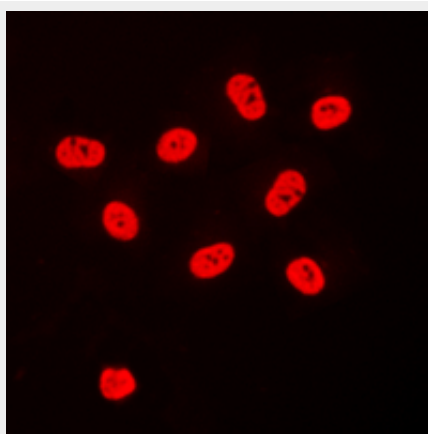
Anti-SP3/4 Antibody - Protocols

Provided below are standard protocols that you may find useful for product applications.

- [Western Blot](#)
- [Blocking Peptides](#)
- [Dot Blot](#)
- [Immunohistochemistry](#)
- [Immunofluorescence](#)
- [Immunoprecipitation](#)
- [Flow Cytometry](#)
- [Cell Culture](#)

Anti-SP3/4 Antibody - Images

Western blot analysis of SP3/4 expression in HeLa (A), K562 (B) whole cell lysates.



Immunofluorescent analysis of SP3/4 staining in HeLa cells. Formalin-fixed cells were permeabilized with 0.1% Triton X-100 in TBS for 5-10 minutes and blocked with 3% BSA-PBS for 30 minutes at room temperature. Cells were probed with the primary antibody in 3% BSA-PBS and incubated overnight at 4 °C in a humidified chamber. Cells were washed with PBST and incubated with a DyLight 594-conjugated secondary antibody (red) in PBS at room temperature in the dark.

Anti-SP3/4 Antibody - Background

Rabbit polyclonal antibody to SP3/4