

Anti-Apolipoprotein B Receptor Antibody
Catalog # AP53800**Specification**

Anti-Apolipoprotein B Receptor Antibody - Product Information

Application	WB
Primary Accession	Q0VD83
Reactivity	Human, Rat
Host	Rabbit
Clonality	Polyclonal
Calculated MW	115634

Anti-Apolipoprotein B Receptor Antibody - Additional Information**Gene ID** 55911**Other Names**

APOB48R; Apolipoprotein B receptor; Apolipoprotein B-100 receptor; Apolipoprotein B-48 receptor; Apolipoprotein B48 receptor; apoB-48R

Target/Specificity

KLH-conjugated synthetic peptide encompassing a sequence within the N-term region of human Apolipoprotein B Receptor. The exact sequence is proprietary.

Dilution

WB~~1/500 - 1/1000

Format

Liquid in 0.42% Potassium phosphate, 0.87% Sodium chloride, pH 7.3, 30% glycerol, and 0.09% (W/V) sodium azide.

Storage

Store at -20 °C.Stable for 12 months from date of receipt

Anti-Apolipoprotein B Receptor Antibody - Protein Information**Name** APOBR ([HGNC:24087](#))**Synonyms** APOB48R**Function**

Macrophage receptor that binds to the apolipoprotein B48 (APOB) of dietary triglyceride (TG)-rich lipoproteins (TRL) or to a like domain of APOB in hypertriglyceridemic very low density lipoprotein (HTG-VLDL). Binds and internalizes TRL when out of the context of the macrophage. May provide essential lipids to reticuloendothelial cells. Could also be involved in foam cell formation with elevated TRL and remnant lipoprotein (RLP). Mediates the rapid high-affinity uptake of chylomicrons (CM), HTG-VLDL, and trypsinized (tryp) VLDL devoid of APOE in vitro in macrophages.

Cellular Location

Cell membrane; Peripheral membrane protein. Note= Binds monocyte-macrophage membrane. Thought to be anchored in the membrane through an interaction with an integral membrane protein

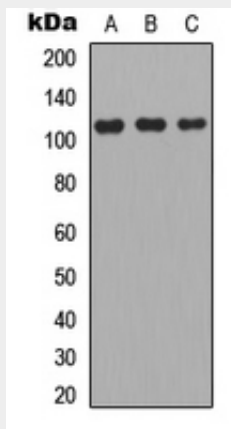
Tissue Location

Expressed in peripheral blood leukocytes > bone marrow = spleen > lymph node, and only faintly visible in appendix and thymus. Expressed in the brain, heart, kidney, liver, lung, pancreas, and placenta. Expressed primarily by reticuloendothelial cells: monocytes, macrophages, and endothelial cells. Expressed in atherosclerotic lesion foam cells.

Anti-Apolipoprotein B Receptor Antibody - Protocols

Provided below are standard protocols that you may find useful for product applications.

- [Western Blot](#)
- [Blocking Peptides](#)
- [Dot Blot](#)
- [Immunohistochemistry](#)
- [Immunofluorescence](#)
- [Immunoprecipitation](#)
- [Flow Cytometry](#)
- [Cell Culture](#)

Anti-Apolipoprotein B Receptor Antibody - Images

Western blot analysis of Apolipoprotein B Receptor expression in A549 (A), MCF7 (B), PC12 (C) whole cell lysates.

Anti-Apolipoprotein B Receptor Antibody - Background

Rabbit polyclonal antibody to Apolipoprotein B Receptor