

Anti-Cadherin 23 Antibody
Catalog # AP53803**Specification**

Anti-Cadherin 23 Antibody - Product Information

Application	WB, IF, IHC
Primary Accession	Q9H251
Reactivity	Human, Mouse, Rat
Host	Rabbit
Clonality	Polyclonal
Calculated MW	369494

Anti-Cadherin 23 Antibody - Additional Information**Gene ID** 64072**Other Names**

KIAA1774; KIAA1812; Cadherin-23; Otocadherin

Target/Specificity

Recognizes endogenous levels of Cadherin 23 protein.

Dilution

WB~~1/500 - 1/1000

IF~~1/50 - 1/200

IHC~~1:100~500

Format

Liquid in 0.42% Potassium phosphate, 0.87% Sodium chloride, pH 7.3, 30% glycerol, and 0.09% (W/V) sodium azide.

Storage

Store at -20 °C.Stable for 12 months from date of receipt

Anti-Cadherin 23 Antibody - Protein Information**Name** CDH23 {ECO:0000303|PubMed:11138009, ECO:0000312|HGNC:HGNC:13733}**Function**

Cadherins are calcium-dependent cell adhesion proteins. They preferentially interact with themselves in a homophilic manner in connecting cells. CDH23 is required for establishing and/or maintaining the proper organization of the stereocilia bundle of hair cells in the cochlea and the vestibule during late embryonic/early postnatal development. It is part of the functional network formed by USH1C, USH1G, CDH23 and MYO7A that mediates mechanotransduction in cochlear hair cells. Required for normal hearing.

Cellular Location

Cell membrane; Single-pass type I membrane protein

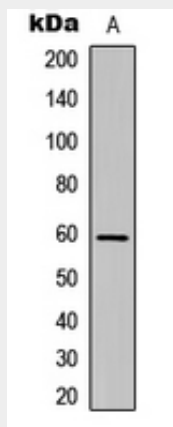
Tissue Location

Particularly strong expression in the retina (PubMed:11138009). Found also in the cochlea

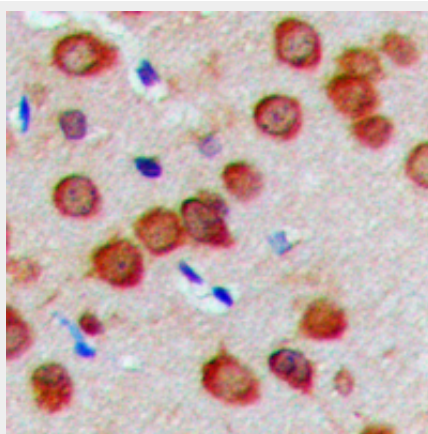
Anti-Cadherin 23 Antibody - Protocols

Provided below are standard protocols that you may find useful for product applications.

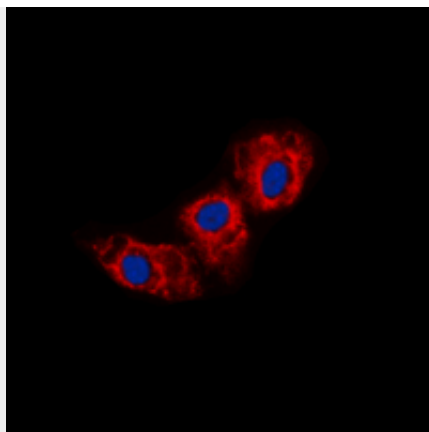
- [Western Blot](#)
- [Blocking Peptides](#)
- [Dot Blot](#)
- [Immunohistochemistry](#)
- [Immunofluorescence](#)
- [Immunoprecipitation](#)
- [Flow Cytometry](#)
- [Cell Culture](#)

Anti-Cadherin 23 Antibody - Images

Western blot analysis of Cadherin 23 expression in HEK293T (A) whole cell lysates.



Immunohistochemical analysis of Cadherin 23 staining in human brain formalin fixed paraffin embedded tissue section. The section was pre-treated using heat mediated antigen retrieval with sodium citrate buffer (pH 6.0). The section was then incubated with the antibody at room temperature and detected using an HRP conjugated compact polymer system. DAB was used as the chromogen. The section was then counterstained with haematoxylin and mounted with DPX.



Immunofluorescent analysis of Cadherin 23 staining in HEK293T cells. Formalin-fixed cells were permeabilized with 0.1% Triton X-100 in TBS for 5-10 minutes and blocked with 3% BSA-PBS for 30 minutes at room temperature. Cells were probed with the primary antibody in 3% BSA-PBS and incubated overnight at 4 °C in a humidified chamber. Cells were washed with PBST and incubated with a DyLight 594-conjugated secondary antibody (red) in PBS at room temperature in the dark. DAPI was used to stain the cell nuclei (blue).

Anti-Cadherin 23 Antibody - Background

Rabbit polyclonal antibody to Cadherin 23