

**Anti-CYFIP1 Antibody**  
**Catalog # AP53808****Specification**

---

**Anti-CYFIP1 Antibody - Product Information**

Application	WB
Primary Accession	<a href="#">Q7L576</a>
Reactivity	Human, Mouse, Rat
Host	Rabbit
Clonality	Polyclonal
Calculated MW	145182

**Anti-CYFIP1 Antibody - Additional Information****Gene ID** 23191**Other Names**

KIAA0068; Cytoplasmic FMR1-interacting protein 1; Specifically Rac1-associated protein 1; Sra-1; p140sra-1

**Target/Specificity**

KLH-conjugated synthetic peptide encompassing a sequence within the C-term region of human CYFIP1. The exact sequence is proprietary.

**Dilution**

WB~~1/500 - 1/1000

**Format**

Liquid in 0.42% Potassium phosphate, 0.87% Sodium chloride, pH 7.3, 30% glycerol, and 0.09% (W/V) sodium azide.

**Storage**

Store at -20 °C.Stable for 12 months from date of receipt

**Anti-CYFIP1 Antibody - Protein Information****Name** CYFIP1 ([HGNC:13759](#))**Function**

Component of the CYFIP1-EIF4E-FMR1 complex which binds to the mRNA cap and mediates translational repression. In the CYFIP1-EIF4E- FMR1 complex this subunit is an adapter between EIF4E and FMR1. Promotes the translation repression activity of FMR1 in brain probably by mediating its association with EIF4E and mRNA (By similarity). Regulates formation of membrane ruffles and lamellipodia. Plays a role in axon outgrowth. Binds to F-actin but not to RNA. Part of the WAVE complex that regulates actin filament reorganization via its interaction with the Arp2/3 complex. Actin remodeling activity is regulated by RAC1. Regulator of epithelial morphogenesis. As component of the WAVE1 complex, required for BDNF-NTRK2 endocytic trafficking and signaling from early endosomes (By similarity). May act as an invasion suppressor in cancers.

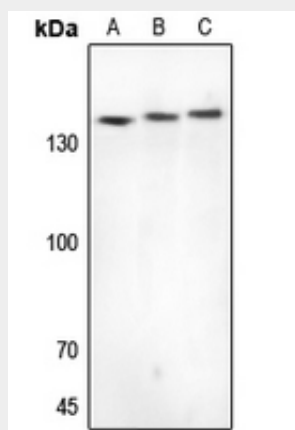
**Cellular Location**

Cytoplasm {ECO:0000250|UniProtKB:Q7TMB8}. Cytoplasm, perinuclear region {ECO:0000250|UniProtKB:Q7TMB8}. Cell projection, lamellipodium {ECO:0000250|UniProtKB:Q7TMB8}. Cell projection, ruffle {ECO:0000250|UniProtKB:Q7TMB8}. Synapse, synaptosome {ECO:0000250|UniProtKB:Q7TMB8}. Note=Highly expressed in the perinuclear region (By similarity). Enriched in synaptosomes (By similarity). Also enriched in membrane ruffles and at the tips of lamellipodia (By similarity). {ECO:0000250|UniProtKB:Q7TMB8}

**Anti-CYFIP1 Antibody - Protocols**

Provided below are standard protocols that you may find useful for product applications.

- [Western Blot](#)
- [Blocking Peptides](#)
- [Dot Blot](#)
- [Immunohistochemistry](#)
- [Immunofluorescence](#)
- [Immunoprecipitation](#)
- [Flow Cytometry](#)
- [Cell Culture](#)

**Anti-CYFIP1 Antibody - Images**

Western blot analysis of CYFIP1 expression in Hela (A), mouse brain (B), rat brain (C) whole cell lysates.

**Anti-CYFIP1 Antibody - Background**

Rabbit polyclonal antibody to CYFIP1