

Anti-LPHN2 Antibody
Catalog # AP53822**Specification**

Anti-LPHN2 Antibody - Product Information

Application	WB, IH
Primary Accession	O95490
Reactivity	Human, Mouse, Rat
Host	Rabbit
Clonality	Polyclonal
Calculated MW	163349

Anti-LPHN2 Antibody - Additional Information**Gene ID** 23266**Other Names**

KIAA0786; LEC1; LPHH1; Latrophilin-2; Calcium-independent alpha-latrotoxin receptor 2; CIRL-2; Latrophilin homolog 1; Lectomedin-1

Target/Specificity

Recognizes endogenous levels of LPHN2 protein.

Dilution

WB~~1/500 - 1/1000

IH~~1/50 - 1/200

Format

Liquid in 0.42% Potassium phosphate, 0.87% Sodium chloride, pH 7.3, 30% glycerol, and 0.09% (W/V) sodium azide.

Storage

Store at -20 °C.Stable for 12 months from date of receipt

Anti-LPHN2 Antibody - Protein Information**Name** ADGRL2 ([HGNC:18582](#))**Function**

Calcium-independent receptor of low affinity for alpha- latrotoxin, an excitatory neurotoxin present in black widow spider venom which triggers massive exocytosis from neurons and neuroendocrine cells. Receptor probably implicated in the regulation of exocytosis.

Cellular Location

Membrane; Multi-pass membrane protein

Tissue Location

Expressed very widely in all normal tissues tested. Expression is variable in tumor cell lines,

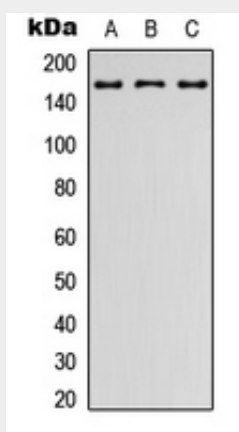
apparently elevated in some lines and absent or markedly reduced in others

Anti-LPHN2 Antibody - Protocols

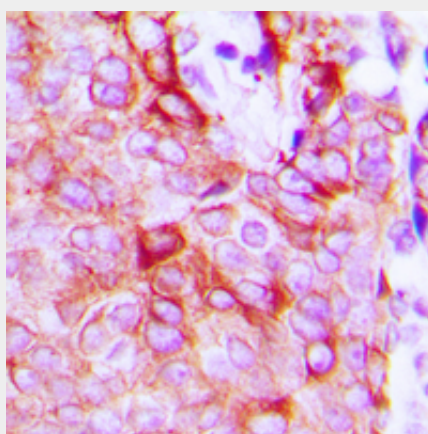
Provided below are standard protocols that you may find useful for product applications.

- [Western Blot](#)
- [Blocking Peptides](#)
- [Dot Blot](#)
- [Immunohistochemistry](#)
- [Immunofluorescence](#)
- [Immunoprecipitation](#)
- [Flow Cytometry](#)
- [Cell Culture](#)

Anti-LPHN2 Antibody - Images



Western blot analysis of LPHN2 expression in HEK293T (A), Raw264.7 (B), PC12 (C) whole cell lysates.



Immunohistochemical analysis of LPHN2 staining in human breast cancer formalin fixed paraffin embedded tissue section. The section was pre-treated using heat mediated antigen retrieval with sodium citrate buffer (pH 6.0). The section was then incubated with the antibody at room temperature and detected using an HRP conjugated compact polymer system. DAB was used as the chromogen. The section was then counterstained with haematoxylin and mounted with DPX.

Anti-LPHN2 Antibody - Background

Rabbit polyclonal antibody to LPHN2