

Anti-RPL3L Antibody
Catalog # AP53831**Specification**

Anti-RPL3L Antibody - Product Information

Application	WB, IF, IHC
Primary Accession	Q92901
Reactivity	Human, Mouse, Rat
Host	Rabbit
Clonality	Polyclonal
Calculated MW	46296

Anti-RPL3L Antibody - Additional Information**Gene ID** 6123**Other Names**

60S ribosomal protein L3-like

Target/Specificity

Recognizes endogenous levels of RPL3L protein.

Dilution

WB~~1/500 - 1/1000

IF~~1/50 - 1/200

IHC~~1:100~500

Format

Liquid in 0.42% Potassium phosphate, 0.87% Sodium chloride, pH 7.3, 30% glycerol, and 0.09% (W/V) sodium azide.

Storage

Store at -20 °C.Stable for 12 months from date of receipt

Anti-RPL3L Antibody - Protein Information**Name** RPL3L {ECO:0000303|PubMed:8921388, ECO:0000312|HGNC:HGNC:10351}**Function**

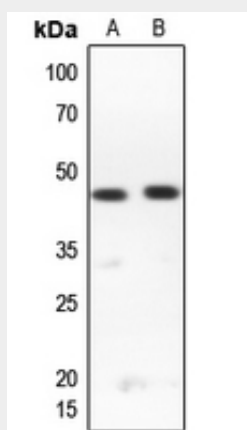
Heart- and skeletal muscle-specific component of the ribosome, which regulates muscle function. Component of the large ribosomal subunit in striated muscle cells: replaces the RPL3 paralog in the ribosome in these cells. The ribosome is a large ribonucleoprotein complex responsible for the synthesis of proteins in the cell. Inhibits myotube growth and muscle function.

Anti-RPL3L Antibody - Protocols

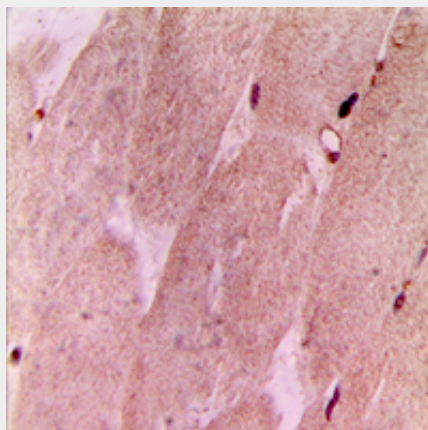
Provided below are standard protocols that you may find useful for product applications.

- [Western Blot](#)
- [Blocking Peptides](#)
- [Dot Blot](#)
- [Immunohistochemistry](#)
- [Immunofluorescence](#)
- [Immunoprecipitation](#)
- [Flow Cytometry](#)
- [Cell Culture](#)

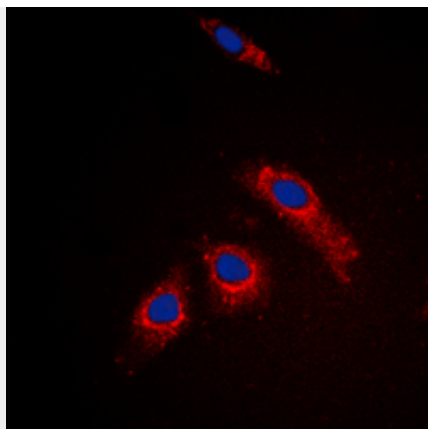
Anti-RPL3L Antibody - Images



Western blot analysis of RPL3L expression in Jurkat (A), HeLa (B) whole cell lysates.



Immunohistochemical analysis of RPL3L staining in human muscle formalin fixed paraffin embedded tissue section. The section was pre-treated using heat mediated antigen retrieval with sodium citrate buffer (pH 6.0). The section was then incubated with the antibody at room temperature and detected using an HRP conjugated compact polymer system. DAB was used as the chromogen. The section was then counterstained with haematoxylin and mounted with DPX.



Immunofluorescent analysis of RPL3L staining in MCF7 cells. Formalin-fixed cells were permeabilized with 0.1% Triton X-100 in TBS for 5-10 minutes and blocked with 3% BSA-PBS for 30 minutes at room temperature. Cells were probed with the primary antibody in 3% BSA-PBS and incubated overnight at 4 °C in a humidified chamber. Cells were washed with PBST and incubated with a DyLight 594-conjugated secondary antibody (red) in PBS at room temperature in the dark. DAPI was used to stain the cell nuclei (blue).

Anti-RPL3L Antibody - Background

Rabbit polyclonal antibody to RPL3L

Anti-RPL3L Antibody - Citations

- [Mining of chicken muscle growth genes and the function of important candidate gene in muscle development](#)