

**Anti-SCD Antibody**  
**Catalog # AP53832****Specification**

---

**Anti-SCD Antibody - Product Information**

Application	WB
Primary Accession	<a href="#">O00767</a>
Reactivity	Human, Mouse, Rat
Host	Rabbit
Clonality	Polyclonal
Calculated MW	41523

**Anti-SCD Antibody - Additional Information****Gene ID** 6319**Other Names**

Acyl-CoA desaturase; Delta(9)-desaturase; Delta-9 desaturase; Fatty acid desaturase; Stearoyl-CoA desaturase

**Target/Specificity**

Recognizes endogenous levels of SCD protein.

**Dilution**

WB~~1/500 - 1/1000

**Format**

Liquid in 0.42% Potassium phosphate, 0.87% Sodium chloride, pH 7.3, 30% glycerol, and 0.09% (W/V) sodium azide.

**Storage**

Store at -20 °C.Stable for 12 months from date of receipt

**Anti-SCD Antibody - Protein Information****Name** SCD**Function**

Stearoyl-CoA desaturase that utilizes O(2) and electrons from reduced cytochrome b5 to introduce the first double bond into saturated fatty acyl-CoA substrates (PubMed:<a href="http://www.uniprot.org/citations/15907797" target="\_blank">15907797</a>, PubMed:<a href="http://www.uniprot.org/citations/18765284" target="\_blank">18765284</a>). Catalyzes the insertion of a cis double bond at the delta-9 position into fatty acyl-CoA substrates including palmitoyl-CoA and stearoyl-CoA (PubMed:<a href="http://www.uniprot.org/citations/15907797" target="\_blank">15907797</a>, PubMed:<a href="http://www.uniprot.org/citations/18765284" target="\_blank">18765284</a>). Gives rise to a mixture of 16:1 and 18:1 unsaturated fatty acids (PubMed:<a href="http://www.uniprot.org/citations/15610069" target="\_blank">15610069</a>). Plays an important role in lipid biosynthesis. Plays an important role in regulating the expression of

genes that are involved in lipogenesis and in regulating mitochondrial fatty acid oxidation (By similarity). Plays an important role in body energy homeostasis (By similarity). Contributes to the biosynthesis of membrane phospholipids, cholesterol esters and triglycerides (By similarity).

**Cellular Location**

Endoplasmic reticulum membrane; Multi-pass membrane protein  
{ECO:0000269|PubMed:18765284, ECO:0000305}

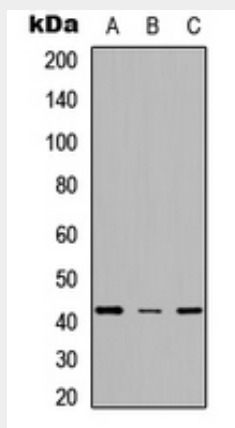
**Tissue Location**

Detected in fetal liver, lung and brain. Highly expressed in adult adipose tissue, and at lower levels in adult brain and lung.

**Anti-SCD Antibody - Protocols**

Provided below are standard protocols that you may find useful for product applications.

- [Western Blot](#)
- [Blocking Peptides](#)
- [Dot Blot](#)
- [Immunohistochemistry](#)
- [Immunofluorescence](#)
- [Immunoprecipitation](#)
- [Flow Cytometry](#)
- [Cell Culture](#)

**Anti-SCD Antibody - Images**

Western blot analysis of SCD expression in HeLa (A), NS-1 (B), PC12 (C) whole cell lysates.

**Anti-SCD Antibody - Background**

Rabbit polyclonal antibody to SCD