

**Anti-YKL-40 Antibody**  
**Catalog # AP53837****Specification**

---

**Anti-YKL-40 Antibody - Product Information**

Application	WB
Primary Accession	<a href="#">P36222</a>
Reactivity	Human, Mouse, Rat
Host	Rabbit
Clonality	Polyclonal
Calculated MW	42625

**Anti-YKL-40 Antibody - Additional Information****Gene ID** 1116**Other Names**

Chitinase-3-like protein 1; 39 kDa synovial protein; Cartilage glycoprotein 39; CGP-39; GP-39; hCGP-39; YKL-40

**Target/Specificity**

KLH-conjugated synthetic peptide encompassing a sequence within the center region of human YKL-40. The exact sequence is proprietary.

**Dilution**

WB~~1/500 - 1/1000

**Format**

Liquid in 0.42% Potassium phosphate, 0.87% Sodium chloride, pH 7.3, 30% glycerol, and 0.09% (W/V) sodium azide.

**Storage**

Store at -20 °C. Stable for 12 months from date of receipt

**Anti-YKL-40 Antibody - Protein Information****Name** CHI3L1**Function**

Carbohydrate-binding lectin with a preference for chitin. Has no chitinase activity. May play a role in tissue remodeling and in the capacity of cells to respond to and cope with changes in their environment. Plays a role in T-helper cell type 2 (Th2) inflammatory response and IL-13-induced inflammation, regulating allergen sensitization, inflammatory cell apoptosis, dendritic cell accumulation and M2 macrophage differentiation. Facilitates invasion of pathogenic enteric bacteria into colonic mucosa and lymphoid organs. Mediates activation of AKT1 signaling pathway and subsequent IL8 production in colonic epithelial cells. Regulates antibacterial responses in lung by contributing to macrophage bacterial killing, controlling bacterial dissemination and augmenting host tolerance. Also regulates hyperoxia- induced injury, inflammation and epithelial

apoptosis in lung.

**Cellular Location**

Secreted, extracellular space. Cytoplasm. Cytoplasm, perinuclear region. Endoplasmic reticulum

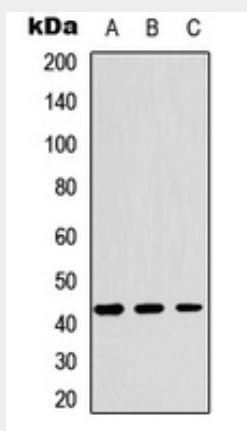
**Tissue Location**

Present in activated macrophages, articular chondrocytes, synovial cells as well as in liver. Very low or undetectable expression in non-inflammatory colon. Undetectable in muscle tissues, lung, pancreas, mononuclear cells, or fibroblasts

**Anti-YKL-40 Antibody - Protocols**

Provided below are standard protocols that you may find useful for product applications.

- [Western Blot](#)
- [Blocking Peptides](#)
- [Dot Blot](#)
- [Immunohistochemistry](#)
- [Immunofluorescence](#)
- [Immunoprecipitation](#)
- [Flow Cytometry](#)
- [Cell Culture](#)

**Anti-YKL-40 Antibody - Images**

Western blot analysis of YKL-40 expression in HEK293T (A), Raw264.7 (B), H9C2 (C) whole cell lysates.

**Anti-YKL-40 Antibody - Background**

Rabbit polyclonal antibody to YKL-40