

Anti-ABHD4 Antibody
Catalog # AP53839**Specification**

Anti-ABHD4 Antibody - Product Information

Application	WB, IH
Primary Accession	Q8TB40
Reactivity	Human, Mouse, Rat
Host	Rabbit
Clonality	Polyclonal
Calculated MW	38794

Anti-ABHD4 Antibody - Additional Information**Gene ID** 63874**Other Names**Abhydrolase domain-containing protein 4; Alpha/beta-hydrolase 4;
Lyso-N-acylphosphatidylethanolamine lipase**Target/Specificity**

Recognizes endogenous levels of ABHD4 protein.

Dilution

WB~~1/500 - 1/1000

IH~~1/50 - 1/200

Format

Liquid in 0.42% Potassium phosphate, 0.87% Sodium chloride, pH 7.3, 30% glycerol, and 0.09% (W/V) sodium azide.

Storage

Store at -20 °C.Stable for 12 months from date of receipt

Anti-ABHD4 Antibody - Protein Information**Name** ABHD4 ([HGNC:20154](#))**Function**

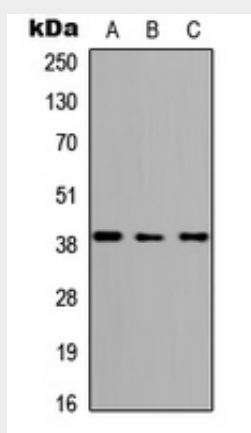
Lysophospholipase selective for N-acyl phosphatidylethanolamine (NAPE). Contributes to the biosynthesis of N- acyl ethanolamines, including the endocannabinoid anandamide by hydrolyzing the sn-1 and sn-2 acyl chains from N-acyl phosphatidylethanolamine (NAPE) generating glycerophospho-N-acyl ethanolamine (GP-NAE), an intermediate for N-acyl ethanolamine biosynthesis. Hydrolyzes substrates bearing saturated, monounsaturated, polyunsaturated N-acyl chains. Shows no significant activity towards other lysophospholipids, including lysophosphatidylcholine, lysophosphatidylethanolamine and lysophosphatidylserine.

Anti-ABHD4 Antibody - Protocols

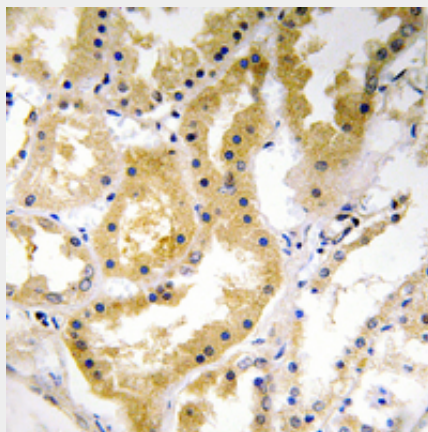
Provided below are standard protocols that you may find useful for product applications.

- [Western Blot](#)
- [Blocking Peptides](#)
- [Dot Blot](#)
- [Immunohistochemistry](#)
- [Immunofluorescence](#)
- [Immunoprecipitation](#)
- [Flow Cytometry](#)
- [Cell Culture](#)

Anti-ABHD4 Antibody - Images



Western blot analysis of ABHD4 expression in HEK293T (A), Raw264.7 (B), H9C2 (C) whole cell lysates.



Immunohistochemical analysis of ABHD4 staining in human kidney formalin fixed paraffin embedded tissue section. The section was pre-treated using heat mediated antigen retrieval with sodium citrate buffer (pH 6.0). The section was then incubated with the antibody at room temperature and detected using an HRP conjugated compact polymer system. DAB was used as the chromogen. The section was then counterstained with haematoxylin and mounted with DPX.

Anti-ABHD4 Antibody - Background

Rabbit polyclonal antibody to ABHD4