

**Anti-ADAMDEC1 Antibody**  
**Catalog # AP53840****Specification**

---

**Anti-ADAMDEC1 Antibody - Product Information**

Application	WB
Primary Accession	<a href="#">O15204</a>
Reactivity	Human, Mouse, Rat
Host	Rabbit
Clonality	Polyclonal
Calculated MW	52775

**Anti-ADAMDEC1 Antibody - Additional Information****Gene ID** 27299**Other Names**

ADAM DEC1; A disintegrin and metalloproteinase domain-like protein decysin-1; ADAM-like protein decysin-1

**Target/Specificity**

Recognizes endogenous levels of ADAMDEC1 protein.

**Dilution**

WB~~1/500 - 1/1000

**Format**

Liquid in 0.42% Potassium phosphate, 0.87% Sodium chloride, pH 7.3, 30% glycerol, and 0.09% (W/V) sodium azide.

**Storage**

Store at -20 °C.Stable for 12 months from date of receipt

**Anti-ADAMDEC1 Antibody - Protein Information****Name** ADAMDEC1**Function**

May play an important role in the control of the immune response and during pregnancy.

**Cellular Location**

Secreted.

**Tissue Location**

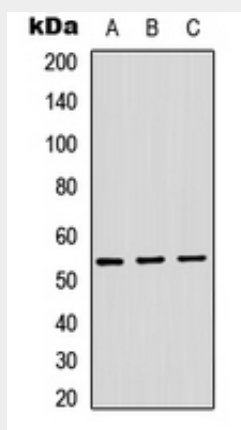
Expressed highly in the small intestine and appendix, moderately in lymph node, mucosal lining of the colon, thymus, spleen and very weakly in the bone marrow. Predominantly expressed in dendritic cells (DC) of the germinal center. Weakly expressed in monocyte and highly expressed in macrophage. Absent in immature DC.

## Anti-ADAMDEC1 Antibody - Protocols

Provided below are standard protocols that you may find useful for product applications.

- [Western Blot](#)
- [Blocking Peptides](#)
- [Dot Blot](#)
- [Immunohistochemistry](#)
- [Immunofluorescence](#)
- [Immunoprecipitation](#)
- [Flow Cytometry](#)
- [Cell Culture](#)

## Anti-ADAMDEC1 Antibody - Images



Western blot analysis of ADAMDEC1 expression in HEK293T (A), Raw264.7 (B), H9C2 (C) whole cell lysates.

## Anti-ADAMDEC1 Antibody - Background

Rabbit polyclonal antibody to ADAMDEC1