

Anti-ARRDC4 Antibody
Catalog # AP53842**Specification**

Anti-ARRDC4 Antibody - Product Information

Application	WB, IH, IF
Primary Accession	Q8NCT1
Reactivity	Human
Host	Rabbit
Clonality	Polyclonal
Calculated MW	45479

Anti-ARRDC4 Antibody - Additional Information**Gene ID** 91947**Other Names**

Arrestin domain-containing protein 4

Target/Specificity

Recognizes endogenous levels of ARRDC4 protein.

Dilution

WB~~1/500 - 1/1000

IH~~1/50 - 1/200

IF~~1/50 - 1/200

Format

Liquid in 0.42% Potassium phosphate, 0.87% Sodium chloride, pH 7.3, 30% glycerol, and 0.09% (W/V) sodium azide.

Storage

Store at -20 °C.Stable for 12 months from date of receipt

Anti-ARRDC4 Antibody - Protein Information**Name** ARRDC4**Function**

Functions as an adapter recruiting ubiquitin-protein ligases to their specific substrates (By similarity). Plays a role in endocytosis of activated G protein-coupled receptors (GPCRs) (Probable). Through an ubiquitination-dependent mechanism also plays a role in the incorporation of SLC11A2 into extracellular vesicles (By similarity). May play a role in glucose uptake (PubMed:19605364). Participates in innate immune response by promoting IFIH1/MDA5 activation through interaction with TRIM65 (PubMed:28594402).

Cellular Location

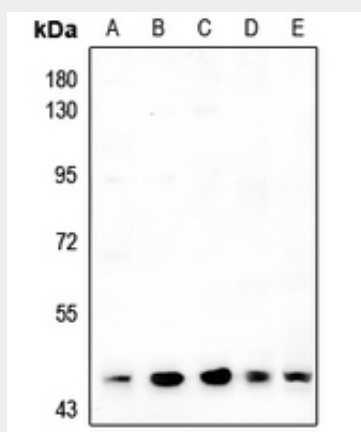
Early endosome. Cell membrane; Peripheral membrane protein; Cytoplasmic side. Cytoplasmic vesicle. Note=Also found in extracellular vesicles different from exosomes.
{ECO:0000250|UniProtKB:A0A0B4J1F4}

Anti-ARRDC4 Antibody - Protocols

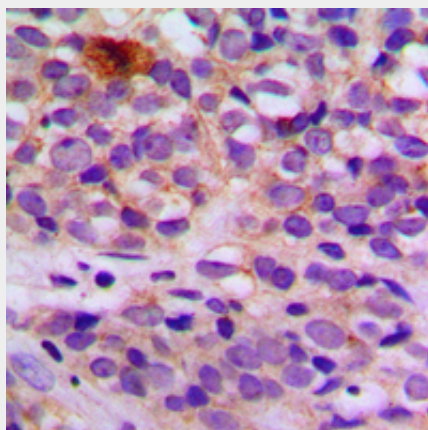
Provided below are standard protocols that you may find useful for product applications.

- [Western Blot](#)
- [Blocking Peptides](#)
- [Dot Blot](#)
- [Immunohistochemistry](#)
- [Immunofluorescence](#)
- [Immunoprecipitation](#)
- [Flow Cytometry](#)
- [Cell Culture](#)

Anti-ARRDC4 Antibody - Images

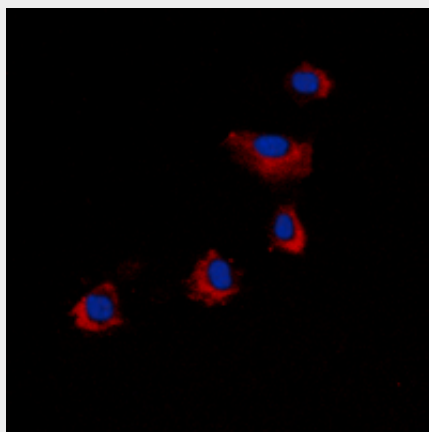


Western blot analysis of ARRDC4 expression in HEK293T (A), Panc1 (B), SGC7901 (C), A549 (D), PC3 (E) whole cell lysates.



Immunohistochemical analysis of ARRDC4 staining in human breast cancer formalin fixed paraffin embedded tissue section. The section was pre-treated using heat mediated antigen retrieval with sodium citrate buffer (pH 6.0). The section was then incubated with the antibody at room temperature and detected using an HRP conjugated compact polymer system. DAB was used as

the chromogen. The section was then counterstained with haematoxylin and mounted with DPX.



Immunofluorescent analysis of ARRDC4 staining in COLO205 cells. Formalin-fixed cells were permeabilized with 0.1% Triton X-100 in TBS for 5-10 minutes and blocked with 3% BSA-PBS for 30 minutes at room temperature. Cells were probed with the primary antibody in 3% BSA-PBS and incubated overnight at 4 °C in a humidified chamber. Cells were washed with PBST and incubated with a DyLight 594-conjugated secondary antibody (red) in PBS at room temperature in the dark. DAPI was used to stain the cell nuclei (blue).

Anti-ARRDC4 Antibody - Background

Rabbit polyclonal antibody to ARRDC4