

Anti-ATP5JL Antibody
Catalog # AP53843**Specification**

Anti-ATP5JL Antibody - Product Information

| | |
|-------------------|------------------------|
| Application | WB |
| Primary Accession | P56134 |
| Reactivity | Human, Mouse, Rat |
| Host | Rabbit |
| Clonality | Polyclonal |
| Calculated MW | 10918 |

Anti-ATP5JL Antibody - Additional Information**Gene ID** 9551**Other Names**

ATP synthase f chain mitochondrial; ATP5JL; ATPK

Target/Specificity

Recognizes endogenous levels of ATP5JL protein.

Dilution

WB~~1/500 - 1/1000

Format

Liquid in 0.42% Potassium phosphate, 0.87% Sodium chloride, pH 7.3, 30% glycerol, and 0.09% (W/V) sodium azide.

Storage

Store at -20 °C.Stable for 12 months from date of receipt

Anti-ATP5JL Antibody - Protein Information**Name** ATP5MF ([HGNC:848](#))**Synonyms** ATP5J2, ATP5JL**Function**

Subunit f, of the mitochondrial membrane ATP synthase complex (F(1)F(0) ATP synthase or Complex V) that produces ATP from ADP in the presence of a proton gradient across the membrane which is generated by electron transport complexes of the respiratory chain (PubMed:37244256). ATP synthase complex consist of a soluble F(1) head domain - the catalytic core - and a membrane F(1) domain - the membrane proton channel (PubMed:37244256). These two domains are linked by a central stalk rotating inside the F(1) region and a stationary peripheral stalk (PubMed:<a href="http://www.uniprot.org/citations/37244256"

target="_blank">37244256). During catalysis, ATP synthesis in the catalytic domain of F(1) is coupled via a rotary mechanism of the central stalk subunits to proton translocation (Probable). In vivo, can only synthesize ATP although its ATP hydrolase activity can be activated artificially in vitro (By similarity). Part of the complex F(0) domain (PubMed:37244256).

Cellular Location

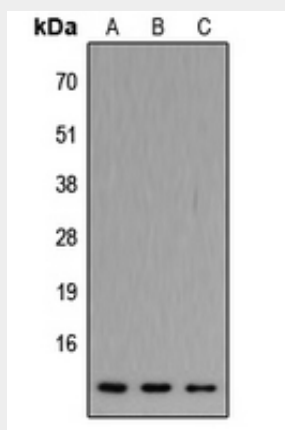
Mitochondrion. Mitochondrion inner membrane; Single-pass membrane protein

Anti-ATP5JL Antibody - Protocols

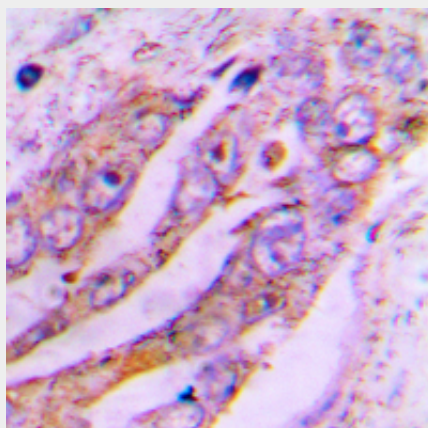
Provided below are standard protocols that you may find useful for product applications.

- [Western Blot](#)
- [Blocking Peptides](#)
- [Dot Blot](#)
- [Immunohistochemistry](#)
- [Immunofluorescence](#)
- [Immunoprecipitation](#)
- [Flow Cytometry](#)
- [Cell Culture](#)

Anti-ATP5JL Antibody - Images



Western blot analysis of ATP5JL expression in HEK293T (A), Raw264.7 (B), H9C2 (C) whole cell lysates.



Immunohistochemical analysis of ATP5JL staining in human lung cancer formalin fixed paraffin embedded tissue section. The section was pre-treated using heat mediated antigen retrieval with sodium citrate buffer (pH 6.0). The section was then incubated with the antibody at room temperature and detected using an HRP conjugated compact polymer system. DAB was used as the chromogen. The section was then counterstained with haematoxylin and mounted with DPX.

Anti-ATP5JL Antibody - Background

Rabbit polyclonal antibody to ATP5JL