

Anti-HEN1/2 Antibody
Catalog # AP53853

Specification

Anti-HEN1/2 Antibody - Product Information

Application	WB, IF, IHC
Primary Accession	Q02575
Other Accession	Q02577
Reactivity	Human, Mouse, Rat
Host	Rabbit
Clonality	Polyclonal
Calculated MW	14618

Anti-HEN1/2 Antibody - Additional Information

Gene ID 4807

Other Names

NHLH1; BHLHA35; HEN1; Helix-loop-helix protein 1; HEN-1; Class A basic helix-loop-helix protein 35; bHLHa35; Nescient helix loop helix 1; NSCL-1; NHLH2; BHLHA34; HEN2; KIAA0490; Helix-loop-helix protein 2; HEN-2; Class A basic helix-loop-helix protein 34; bHLHa34; Nescient helix loop helix 2; NSCL-2

Target/Specificity

KLH-conjugated synthetic peptide encompassing a sequence within the center region of human HEN1/2. The exact sequence is proprietary.

Dilution

WB~~1/500 - 1/1000
IF~~1/50 - 1/200
IHC~~1:100~500

Format

Liquid in 0.42% Potassium phosphate, 0.87% Sodium chloride, pH 7.3, 30% glycerol, and 0.09% (W/V) sodium azide.

Storage

Store at -20 °C. Stable for 12 months from date of receipt

Anti-HEN1/2 Antibody - Protein Information

Name NHLH1

Synonyms BHLHA35, HEN1

Function

May serve as DNA-binding protein and may be involved in the control of cell-type determination, possibly within the developing nervous system.

Cellular Location

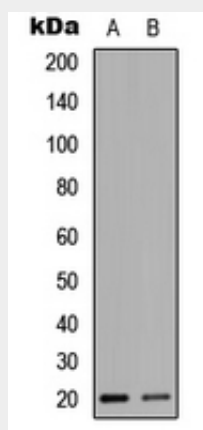
Nucleus {ECO:0000255|PROSITE-ProRule:PRU00981}.

Anti-HEN1/2 Antibody - Protocols

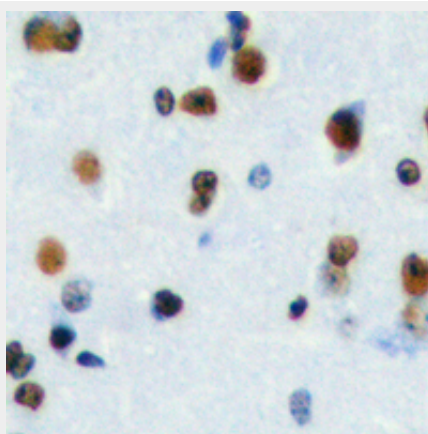
Provided below are standard protocols that you may find useful for product applications.

- [Western Blot](#)
- [Blocking Peptides](#)
- [Dot Blot](#)
- [Immunohistochemistry](#)
- [Immunofluorescence](#)
- [Immunoprecipitation](#)
- [Flow Cytometry](#)
- [Cell Culture](#)

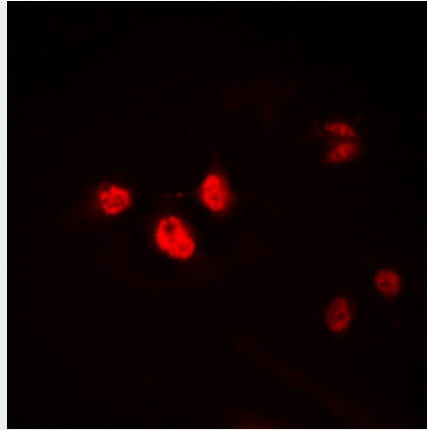
Anti-HEN1/2 Antibody - Images



Western blot analysis of HEN1/2 expression in HEK293T (A), NIH3T3 (B) whole cell lysates.



Immunohistochemical analysis of HEN1/2 staining in human brain formalin fixed paraffin embedded tissue section. The section was pre-treated using heat mediated antigen retrieval with sodium citrate buffer (pH 6.0). The section was then incubated with the antibody at room temperature and detected using an HRP conjugated compact polymer system. DAB was used as the chromogen. The section was then counterstained with haematoxylin and mounted with DPX.



Immunofluorescent analysis of HEN1/2 staining in HEK293T cells. Formalin-fixed cells were permeabilized with 0.1% Triton X-100 in TBS for 5-10 minutes and blocked with 3% BSA-PBS for 30 minutes at room temperature. Cells were probed with the primary antibody in 3% BSA-PBS and incubated overnight at 4 °C in a humidified chamber. Cells were washed with PBST and incubated with a DyLight 594-conjugated secondary antibody (red) in PBS at room temperature in the dark.

Anti-HEN1/2 Antibody - Background

Rabbit polyclonal antibody to HEN1/2