

Anti-KLHL29 Antibody
Catalog # AP53854**Specification**

Anti-KLHL29 Antibody - Product Information

Application	WB, IHC
Primary Accession	Q96CT2
Reactivity	Human, Mouse, Rat
Host	Rabbit
Clonality	Polyclonal
Calculated MW	94228

Anti-KLHL29 Antibody - Additional Information**Gene ID** 114818**Other Names**

KBTBD9; KIAA1921; Kelch-like protein 29; Kelch repeat and BTB domain-containing protein 9

Target/Specificity

KLH-conjugated synthetic peptide encompassing a sequence within the center region of human KLHL29. The exact sequence is proprietary.

Dilution

WB~~1/500 - 1/1000

IHC~~1:100~500

Format

Liquid in 0.42% Potassium phosphate, 0.87% Sodium chloride, pH 7.3, 30% glycerol, and 0.09% (W/V) sodium azide.

Storage

Store at -20 °C.Stable for 12 months from date of receipt

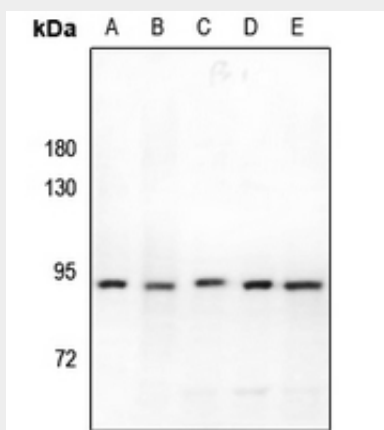
Anti-KLHL29 Antibody - Protein Information**Name** KLHL29**Synonyms** KBTBD9, KIAA1921**Anti-KLHL29 Antibody - Protocols**

Provided below are standard protocols that you may find useful for product applications.

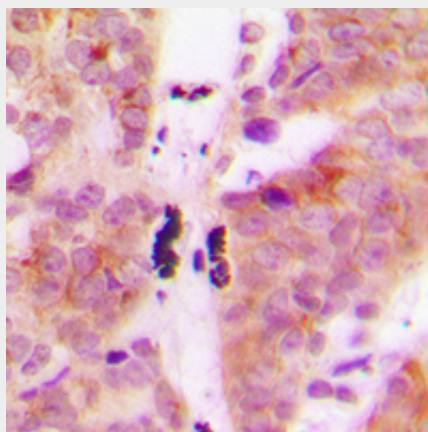
- [Western Blot](#)
- [Blocking Peptides](#)

- [Dot Blot](#)
- [Immunohistochemistry](#)
- [Immunofluorescence](#)
- [Immunoprecipitation](#)
- [Flow Cytometry](#)
- [Cell Culture](#)

Anti-KLHL29 Antibody - Images



Western blot analysis of KLHL29 expression in CT26 (A), C6 (B), LO2 (C), A375 (D), HCT116 (E) whole cell lysates.



Immunohistochemical analysis of KLHL29 staining in human breast cancer formalin fixed paraffin embedded tissue section. The section was pre-treated using heat mediated antigen retrieval with sodium citrate buffer (pH 6.0). The section was then incubated with the antibody at room temperature and detected using an HRP conjugated compact polymer system. DAB was used as the chromogen. The section was then counterstained with haematoxylin and mounted with DPX.

Anti-KLHL29 Antibody - Background

Rabbit polyclonal antibody to KLHL29