

Anti-LY6E Antibody
Catalog # AP53855**Specification**

Anti-LY6E Antibody - Product Information

Application	WB
Primary Accession	Q16553
Reactivity	Human, Mouse, Rat
Host	Rabbit
Clonality	Polyclonal
Calculated MW	13507

Anti-LY6E Antibody - Additional Information**Gene ID** 4061**Other Names**

9804; RIGE; SCA2; TSA1; Lymphocyte antigen 6E; Ly-6E; Retinoic acid-induced gene E protein; RIG-E; Stem cell antigen 2; SCA-2; Thymic shared antigen 1; TSA-1

Target/Specificity

KLH-conjugated synthetic peptide encompassing a sequence within the center region of human LY6E. The exact sequence is proprietary.

Dilution

WB~~1/500 - 1/1000

Format

Liquid in 0.42% Potassium phosphate, 0.87% Sodium chloride, pH 7.3, 30% glycerol, and 0.09% (W/V) sodium azide.

Storage

Store at -20 °C.Stable for 12 months from date of receipt

Anti-LY6E Antibody - Protein Information**Name** LY6E ([HGNC:6727](#))**Synonyms** 9804, RIGE, SCA2, TSA1**Function**

GPI-anchored cell surface protein that regulates T- lymphocytes proliferation, differentiation, and activation. Regulates the T-cell receptor (TCR) signaling by interacting with component CD3Z/CD247 at the plasma membrane, leading to CD3Z/CD247 phosphorylation modulation (By similarity). Restricts the entry of human coronaviruses, including SARS-CoV, MERS-CoV and SARS-CoV-2, by interfering with spike protein-mediated membrane fusion (PubMed:32641482). Also plays an essential role in placenta formation by acting as the main receptor for syncytin-A (SynA).

Therefore, participates in the normal fusion of syncytiotrophoblast layer I (SynT- I) and in the proper morphogenesis of both fetal and maternal vasculatures within the placenta. May also act as a modulator of nicotinic acetylcholine receptors (nAChRs) activity (By similarity).

Cellular Location

Cell membrane {ECO:0000250|UniProtKB:Q64253}; Lipid-anchor, GPI-anchor {ECO:0000250|UniProtKB:Q64253}

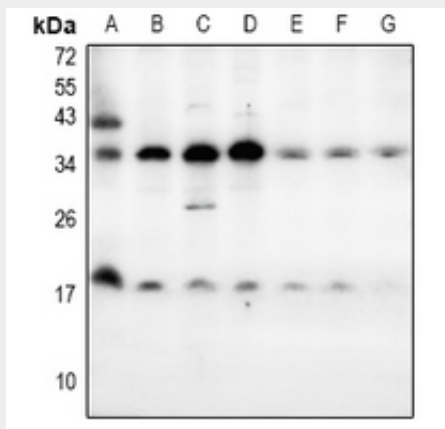
Tissue Location

Widely expressed, predominantly in liver, kidney, ovary, spleen and peripheral blood Leukocytes

Anti-LY6E Antibody - Protocols

Provided below are standard protocols that you may find useful for product applications.

- [Western Blot](#)
- [Blocking Peptides](#)
- [Dot Blot](#)
- [Immunohistochemistry](#)
- [Immunofluorescence](#)
- [Immunoprecipitation](#)
- [Flow Cytometry](#)
- [Cell Culture](#)

Anti-LY6E Antibody - Images

Western blot analysis of LY6E expression in mouse kidney (A), rat ovary (B), AML12 (C), PC12 (D), HepG2 (E), A2780 (F), SKOV3 (G) whole cell lysates.

Anti-LY6E Antibody - Background

Rabbit polyclonal antibody to LY6E