

Anti-NCALD Antibody
Catalog # AP53857**Specification**

Anti-NCALD Antibody - Product Information

| | |
|-------------------|------------------------|
| Application | WB, IHC |
| Primary Accession | P61601 |
| Reactivity | Human, Mouse, Rat |
| Host | Rabbit |
| Clonality | Polyclonal |
| Calculated MW | 22245 |

Anti-NCALD Antibody - Additional Information**Gene ID** 83988**Other Names**

Neurocalcin-delta

Target/Specificity

Recognizes endogenous levels of NCALD protein.

Dilution

WB~~1/500 - 1/1000

IHC~~1:100~500

Format

Liquid in 0.42% Potassium phosphate, 0.87% Sodium chloride, pH 7.3, 30% glycerol, and 0.09% (W/V) sodium azide.

Storage

Store at -20 °C.Stable for 12 months from date of receipt

Anti-NCALD Antibody - Protein Information**Name** NCALD**Function**

May be involved in the calcium-dependent regulation of rhodopsin phosphorylation. Binds three calcium ions.

Tissue Location

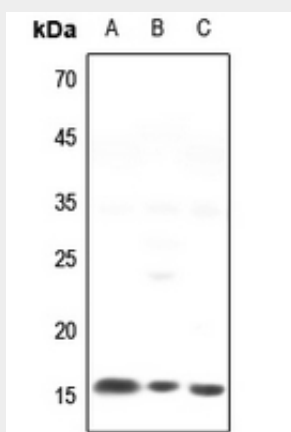
Retina, cerebrum, cerebellum, brain stem, spinal cord, testis, ovary and small intestine

Anti-NCALD Antibody - Protocols

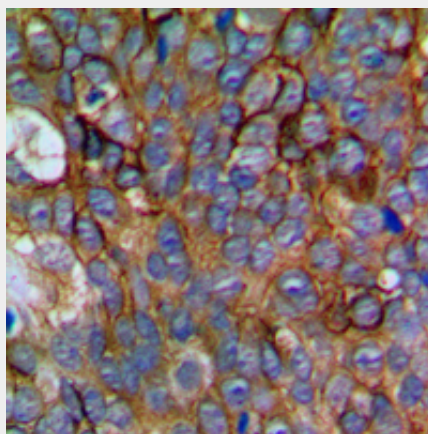
Provided below are standard protocols that you may find useful for product applications.

- [Western Blot](#)
- [Blocking Peptides](#)
- [Dot Blot](#)
- [Immunohistochemistry](#)
- [Immunofluorescence](#)
- [Immunoprecipitation](#)
- [Flow Cytometry](#)
- [Cell Culture](#)

Anti-NCALD Antibody - Images



Western blot analysis of NCALD expression in mouse heart (A), mouse liver (B), rat heart (C) whole cell lysates.



Immunohistochemical analysis of NCALD staining in human prostate cancer formalin fixed paraffin embedded tissue section. The section was pre-treated using heat mediated antigen retrieval with sodium citrate buffer (pH 6.0). The section was then incubated with the antibody at room temperature and detected using an HRP conjugated compact polymer system. DAB was used as the chromogen. The section was then counterstained with haematoxylin and mounted with DPX.

Anti-NCALD Antibody - Background

Rabbit polyclonal antibody to NCALD