

Anti-PINX1 Antibody
Catalog # AP53860**Specification**

Anti-PINX1 Antibody - Product Information

Application	WB, IHC
Primary Accession	Q96BK5
Reactivity	Human, Mouse, Rat
Host	Rabbit
Clonality	Polyclonal
Calculated MW	37035

Anti-PINX1 Antibody - Additional Information**Gene ID** 54984**Other Names**

LPTL; LPTS; PIN2/TERF1-interacting telomerase inhibitor 1; Liver-related putative tumor suppressor; Pin2-interacting protein X1; Protein 67-11-3; TRF1-interacting protein 1

Target/Specificity

Recognizes endogenous levels of PINX1 protein.

Dilution

WB~~1/500 - 1/1000

IHC~~1:100~500

Format

Liquid in 0.42% Potassium phosphate, 0.87% Sodium chloride, pH 7.3, 30% glycerol, and 0.09% (W/V) sodium azide.

Storage

Store at -20 °C.Stable for 12 months from date of receipt

Anti-PINX1 Antibody - Protein Information**Name** PINX1**Synonyms** LPTL, LPTS**Function**

Microtubule-binding protein essential for faithful chromosome segregation. Mediates TRF1 and TERT accumulation in nucleolus and enhances TRF1 binding to telomeres. Inhibits telomerase activity. May inhibit cell proliferation and act as tumor suppressor.

Cellular LocationNucleus. Nucleus, nucleolus. Chromosome, telomere. Chromosome, centromere, kinetochore
Note=Localizes in nucleoli, at telomere speckles and to the outer plate of kinetochores.

Localization to the kinetochore is mediated by its central region and depends on NDC80 and CENPE

Tissue Location

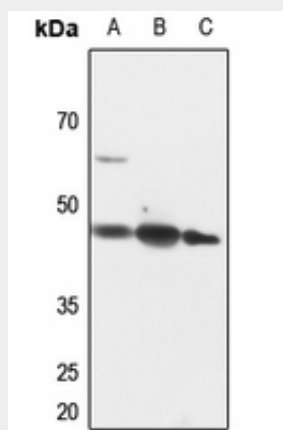
Ubiquitous; expressed at low levels. Not detectable in a number of hepatocarcinoma cell lines

Anti-PINX1 Antibody - Protocols

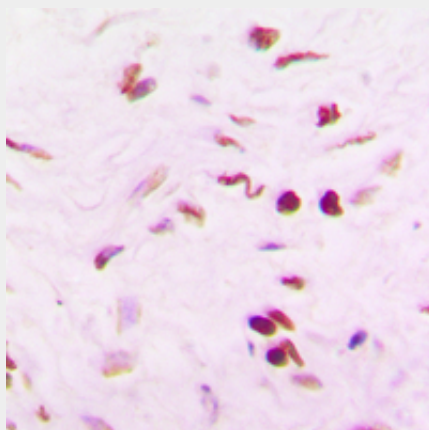
Provided below are standard protocols that you may find useful for product applications.

- [Western Blot](#)
- [Blocking Peptides](#)
- [Dot Blot](#)
- [Immunohistochemistry](#)
- [Immunofluorescence](#)
- [Immunoprecipitation](#)
- [Flow Cytometry](#)
- [Cell Culture](#)

Anti-PINX1 Antibody - Images



Western blot analysis of PINX1 expression in rat heart (A), rat muscle (B), rat brain (C) whole cell lysates.



Immunohistochemical analysis of PINX1 staining in human lung cancer formalin fixed paraffin embedded tissue section. The section was pre-treated using heat mediated antigen retrieval with

sodium citrate buffer (pH 6.0). The section was then incubated with the antibody at room temperature and detected using an HRP conjugated compact polymer system. DAB was used as the chromogen. The section was then counterstained with haematoxylin and mounted with DPX.

Anti-PINX1 Antibody - Background

Rabbit polyclonal antibody to PINX1