

Anti-SH2D4A Antibody
Catalog # AP53870**Specification**

Anti-SH2D4A Antibody - Product Information

Application	WB, IHC
Primary Accession	Q9H788
Reactivity	Human, Mouse, Rat
Host	Rabbit
Clonality	Polyclonal
Calculated MW	52727

Anti-SH2D4A Antibody - Additional Information**Gene ID** 63898**Other Names**

PPP1R38; SH2A; SH2 domain-containing protein 4A; Protein SH(2)A; Protein phosphatase 1 regulatory subunit 38

Target/Specificity

KLH-conjugated synthetic peptide encompassing a sequence within the center region of human SH2D4A. The exact sequence is proprietary.

Dilution

WB~~1/500 - 1/1000

IHC~~1:100~500

Format

Liquid in 0.42% Potassium phosphate, 0.87% Sodium chloride, pH 7.3, 30% glycerol, and 0.09% (W/V) sodium azide.

Storage

Store at -20 °C.Stable for 12 months from date of receipt

Anti-SH2D4A Antibody - Protein Information**Name** SH2D4A**Synonyms** PPP1R38, SH2A**Function**

Inhibits estrogen-induced cell proliferation by competing with PLCG for binding to ESR1, blocking the effect of estrogen on PLCG and repressing estrogen-induced proliferation. May play a role in T-cell development and function.

Cellular Location

Cytoplasm. Note=Located at podocyte foot processes.

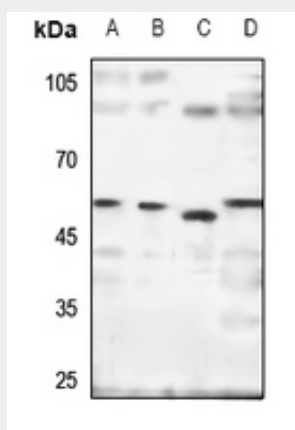
Tissue Location

Ubiquitously expressed. Aberrantly expressed in some cancers.

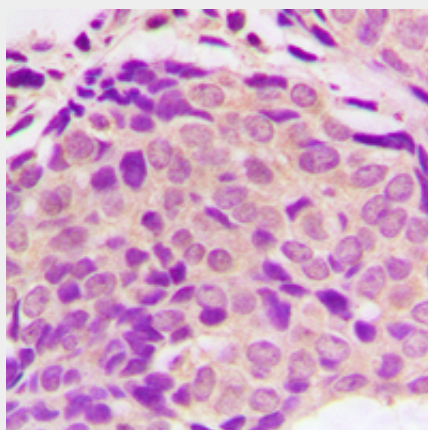
Anti-SH2D4A Antibody - Protocols

Provided below are standard protocols that you may find useful for product applications.

- [Western Blot](#)
- [Blocking Peptides](#)
- [Dot Blot](#)
- [Immunohistochemistry](#)
- [Immunofluorescence](#)
- [Immunoprecipitation](#)
- [Flow Cytometry](#)
- [Cell Culture](#)

Anti-SH2D4A Antibody - Images

Western blot analysis of SH2D4A expression in mouse kidney (A), mouse liver (B), rat kidney (C), rat liver (D) whole cell lysates.



Immunohistochemical analysis of SH2D4A staining in human breast cancer formalin fixed paraffin embedded tissue section. The section was pre-treated using heat mediated antigen retrieval with sodium citrate buffer (pH 6.0). The section was then incubated with the antibody at room temperature and detected using an HRP conjugated compact polymer system. DAB was used as the chromogen. The section was then counterstained with haematoxylin and mounted with DPX.

Anti-SH2D4A Antibody - Background

Rabbit polyclonal antibody to SH2D4A