

Anti-TCF4/12 Antibody
Catalog # AP53876**Specification**

Anti-TCF4/12 Antibody - Product Information

Application	WB, IHC
Primary Accession	P15884
Other Accession	Q99081
Reactivity	Human, Mouse, Rat
Host	Rabbit
Clonality	Polyclonal
Calculated MW	71308

Anti-TCF4/12 Antibody - Additional Information**Gene ID** 6925**Other Names**

TCF4; BHLHB19; ITF2; SEF2; Transcription factor 4; TCF-4; Class B basic helix-loop-helix protein 19; bHLHB19; Immunoglobulin transcription factor 2; ITF-2; SL3-3 enhancer factor 2; SEF-2; TCF12; BHLHB20; HEB; HTF4; Transcription factor 12; TCF-12; Class B basic helix-loop-helix protein 20; bHLHB20; DNA-binding protein HTF4; E-box-binding protein; Transcription factor HTF-4

Target/Specificity

KLH-conjugated synthetic peptide encompassing a sequence within the C-term region of human TCF4/12. The exact sequence is proprietary.

Dilution

WB~~1/500 - 1/1000

IHC~~1:100~500

Format

Liquid in 0.42% Potassium phosphate, 0.87% Sodium chloride, pH 7.3, 30% glycerol, and 0.09% (W/V) sodium azide.

Storage

Store at -20 °C.Stable for 12 months from date of receipt

Anti-TCF4/12 Antibody - Protein Information**Name** TCF4**Synonyms** BHLHB19, ITF2, SEF2**Function**

Transcription factor that binds to the immunoglobulin enhancer Mu-E5/KE5-motif. Involved in the initiation of neuronal differentiation. Activates transcription by binding to the E box (5'-CANNTG-3'). Binds to the E-box present in the somatostatin receptor 2 initiator element

(SSTR2-INR) to activate transcription (By similarity). Preferentially binds to either 5'-ACANNTGT-3' or 5'-CCANNTGG-3'.

Cellular Location

Nucleus {ECO:0000255|PROSITE-ProRule:PRU00981, ECO:0000269|PubMed:22777675}

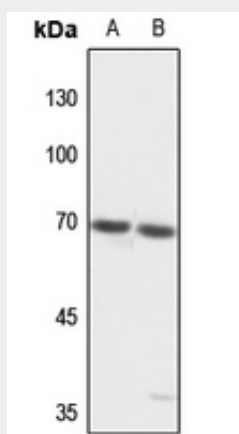
Tissue Location

Expressed in adult heart, brain, placenta, skeletal muscle and to a lesser extent in the lung. In developing embryonic tissues, expression mostly occurs in the brain

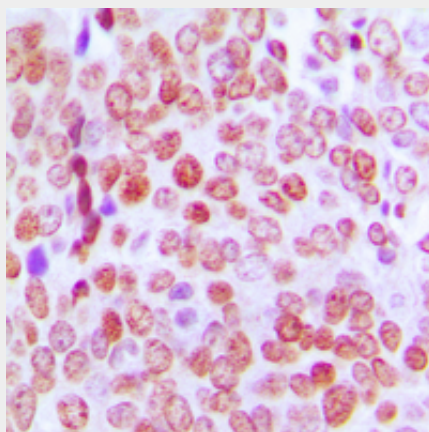
Anti-TCF4/12 Antibody - Protocols

Provided below are standard protocols that you may find useful for product applications.

- [Western Blot](#)
- [Blocking Peptides](#)
- [Dot Blot](#)
- [Immunohistochemistry](#)
- [Immunofluorescence](#)
- [Immunoprecipitation](#)
- [Flow Cytometry](#)
- [Cell Culture](#)

Anti-TCF4/12 Antibody - Images

Western blot analysis of TCF4/12 expression in H446 (A), mouse liver (B) whole cell lysates.



Immunohistochemical analysis of TCF4/12 staining in human prostate cancer formalin fixed paraffin embedded tissue section. The section was pre-treated using heat mediated antigen retrieval with sodium citrate buffer (pH 6.0). The section was then incubated with the antibody at room temperature and detected using an HRP conjugated compact polymer system. DAB was used as the chromogen. The section was then counterstained with haematoxylin and mounted with DPX.

Anti-TCF4/12 Antibody - Background

Rabbit polyclonal antibody to TCF4/12