

Anti-TCOF1 Antibody
Catalog # AP53877**Specification**

Anti-TCOF1 Antibody - Product Information

Application	WB, IH, IF
Primary Accession	Q13428
Reactivity	Human
Host	Rabbit
Clonality	Polyclonal
Calculated MW	152106

Anti-TCOF1 Antibody - Additional Information**Gene ID** 6949**Other Names**

Treacle protein; Treacher Collins syndrome protein

Target/Specificity

Recognizes endogenous levels of TCOF1 protein.

Dilution

WB~~1/500 - 1/1000

IH~~1/50 - 1/200

IF~~1/50 - 1/200

Format

Liquid in 0.42% Potassium phosphate, 0.87% Sodium chloride, pH 7.3, 30% glycerol, and 0.09% (W/V) sodium azide.

Storage

Store at -20 °C. Stable for 12 months from date of receipt

Anti-TCOF1 Antibody - Protein Information**Name** TCOF1**Function**

Nucleolar protein that acts as a regulator of RNA polymerase I by connecting RNA polymerase I with enzymes responsible for ribosomal processing and modification (PubMed: [12777385](http://www.uniprot.org/citations/12777385), PubMed: [26399832](http://www.uniprot.org/citations/26399832)). Required for neural crest specification: following monoubiquitination by the BCR(KBTBD8) complex, associates with NOLC1 and acts as a platform to connect RNA polymerase I with enzymes responsible for ribosomal processing and modification, leading to remodel the translational program of differentiating cells in favor of neural crest specification (PubMed: [26399832](http://www.uniprot.org/citations/26399832)).

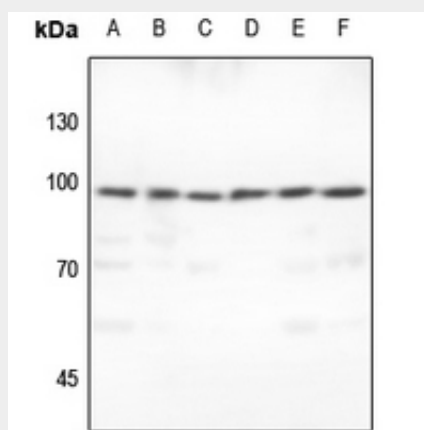
Cellular Location

Nucleus, nucleolus.

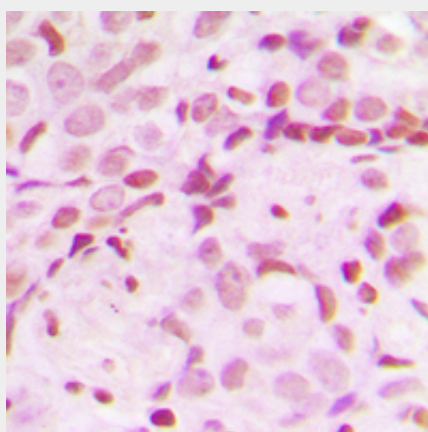
Anti-TCOF1 Antibody - Protocols

Provided below are standard protocols that you may find useful for product applications.

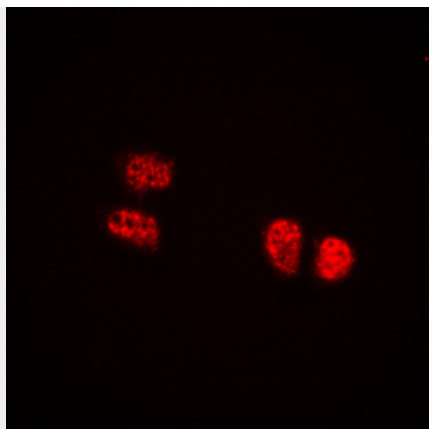
- [Western Blot](#)
- [Blocking Peptides](#)
- [Dot Blot](#)
- [Immunohistochemistry](#)
- [Immunofluorescence](#)
- [Immunoprecipitation](#)
- [Flow Cytometry](#)
- [Cell Culture](#)

Anti-TCOF1 Antibody - Images

Western blot analysis of TCOF1 expression in Hela (A), K562 (B), PC3 (C), U87MG (D), A549 (E), MCF7 (F) whole cell lysates.



Immunohistochemical analysis of TCOF1 staining in human breast cancer formalin fixed paraffin embedded tissue section. The section was pre-treated using heat mediated antigen retrieval with sodium citrate buffer (pH 6.0). The section was then incubated with the antibody at room temperature and detected using an HRP conjugated compact polymer system. DAB was used as the chromogen. The section was then counterstained with haematoxylin and mounted with DPX.



Immunofluorescent analysis of TCOF1 staining in HEK293T cells. Formalin-fixed cells were permeabilized with 0.1% Triton X-100 in TBS for 5-10 minutes and blocked with 3% BSA-PBS for 30 minutes at room temperature. Cells were probed with the primary antibody in 3% BSA-PBS and incubated overnight at 4 °C in a humidified chamber. Cells were washed with PBST and incubated with a DyLight 594-conjugated secondary antibody (red) in PBS at room temperature in the dark.

Anti-TCOF1 Antibody - Background

Rabbit polyclonal antibody to TCOF1