

**Anti-Filaggrin Antibody**  
**Catalog # AP53883****Specification**

---

**Anti-Filaggrin Antibody - Product Information**

Application	WB, IHC
Primary Accession	<a href="#">P20930</a>
Reactivity	Human, Mouse, Rat
Host	Rabbit
Clonality	Polyclonal
Calculated MW	435170

**Anti-Filaggrin Antibody - Additional Information****Gene ID** 2312**Other Names**

Filaggrin

**Target/Specificity**

KLH-conjugated synthetic peptide encompassing a sequence within the N-term region of human Filaggrin. The exact sequence is proprietary.

**Dilution**

WB~~1/500 - 1/1000

IHC~~1:100~500

**Format**

Liquid in 0.42% Potassium phosphate, 0.87% Sodium chloride, pH 7.3, 30% glycerol, and 0.09% (W/V) sodium azide.

**Storage**

Store at -20 °C. Stable for 12 months from date of receipt

**Anti-Filaggrin Antibody - Protein Information****Name** FLG**Function**

Aggregates keratin intermediate filaments and promotes disulfide-bond formation among the intermediate filaments during terminal differentiation of mammalian epidermis.

**Cellular Location**

Cytoplasmic granule. Note=In the stratum granulosum of the epidermis, localized within keratohyalin granules (PubMed:1429717). In granular keratinocytes and in lower corneocytes, colocalizes with calpain-1/CAPN1 (PubMed:21531719).

**Tissue Location**

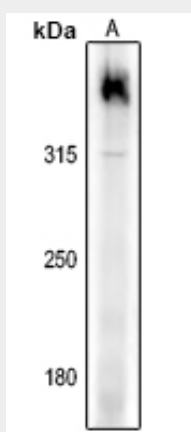
Expressed in skin, thymus, stomach, tonsils, testis, placenta, kidney, pancreas, mammary gland, bladder, thyroid, salivary gland and trachea, but not detected in heart, brain, liver, lung, bone marrow, small intestine, spleen, prostate, colon, or adrenal gland (PubMed:19384417). In the skin, mainly expressed in stratum granulosum of the epidermis (PubMed:1429717, PubMed:19384417)

### Anti-Filaggrin Antibody - Protocols

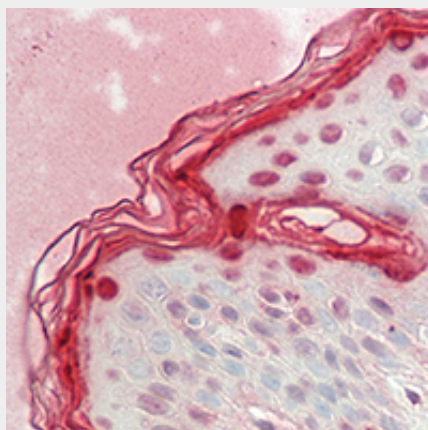
Provided below are standard protocols that you may find useful for product applications.

- [Western Blot](#)
- [Blocking Peptides](#)
- [Dot Blot](#)
- [Immunohistochemistry](#)
- [Immunofluorescence](#)
- [Immunoprecipitation](#)
- [Flow Cytometry](#)
- [Cell Culture](#)

### Anti-Filaggrin Antibody - Images



Western blot analysis of Filaggrin expression in Myla2059 (A) whole cell lysates.



Immunohistochemical analysis of Filaggrin staining in human skin formalin fixed paraffin embedded tissue section. The section was pre-treated using heat mediated antigen retrieval with sodium citrate buffer (pH 6.0). The section was then incubated with the antibody at room temperature and detected using an HRP conjugated compact polymer system. AEC was used as

the chromogen. The section was then counterstained with haematoxylin and mounted with DPX.

#### **Anti-Filaggrin Antibody - Background**

Rabbit polyclonal antibody to Filaggrin

#### **Anti-Filaggrin Antibody - Citations**

- [β-Cyclodextrin/dialdehyde glucan-coated keratin nanoparticles for oral delivery of insulin](#)