

IFT172 Antibody (N-term)
Affinity Purified Rabbit Polyclonal Antibody (Pab)
Catalog # AP5388a**Specification**

IFT172 Antibody (N-term) - Product Information

Application	FC, WB,E
Primary Accession	O9UG01
Other Accession	O9JKU3 , O6VH22 , NP_056477.1
Reactivity	Human, Mouse
Predicted	Rat
Host	Rabbit
Clonality	Polyclonal
Isotype	Rabbit IgG
Calculated MW	197576
Antigen Region	28-57

IFT172 Antibody (N-term) - Additional Information**Gene ID** 26160**Other Names**

Intraflagellar transport protein 172 homolog, IFT172, KIAA1179

Target/Specificity

This IFT172 antibody is generated from rabbits immunized with a KLH conjugated synthetic peptide between 28-57 amino acids from the N-terminal region of human IFT172.

Dilution

FC~~1:10~50

WB~~1:1000

E~~Use at an assay dependent concentration.

Format

Purified polyclonal antibody supplied in PBS with 0.09% (W/V) sodium azide. This antibody is purified through a protein A column, followed by peptide affinity purification.

Storage

Maintain refrigerated at 2-8°C for up to 2 weeks. For long term storage store at -20°C in small aliquots to prevent freeze-thaw cycles.

Precautions

IFT172 Antibody (N-term) is for research use only and not for use in diagnostic or therapeutic procedures.

IFT172 Antibody (N-term) - Protein Information**Name** IFT172

Synonyms KIAA1179

Function Required for the maintenance and formation of cilia. Plays an indirect role in hedgehog (Hh) signaling, cilia being required for all activity of the hedgehog pathway (By similarity).

Cellular Location

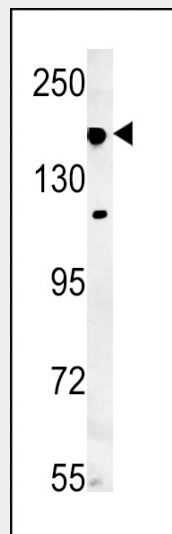
Cell projection, cilium. Note=Localized to the axoneme and around the base of the cilium

IFT172 Antibody (N-term) - Protocols

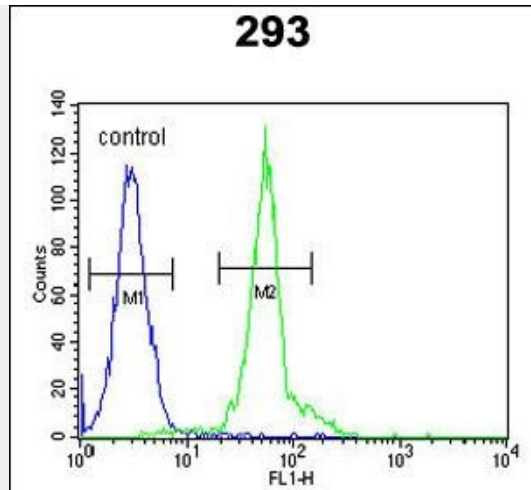
Provided below are standard protocols that you may find useful for product applications.

- [Western Blot](#)
- [Blocking Peptides](#)
- [Dot Blot](#)
- [Immunohistochemistry](#)
- [Immunofluorescence](#)
- [Immunoprecipitation](#)
- [Flow Cytometry](#)
- [Cell Culture](#)

IFT172 Antibody (N-term) - Images



IFT172 Antibody (N-term)(Cat. #AP5388a) western blot analysis in mouse lung tissue lysates (35ug/lane). This demonstrates the IFT172 antibody detected IFT172 protein (arrow).



IFT172 Antibody (N-term) (Cat. #AP5388a) flow cytometric analysis of 293 cells (right histogram) compared to a negative control cell (left histogram). FITC-conjugated goat-anti-rabbit secondary antibodies were used for the analysis.

IFT172 Antibody (N-term) - References

Howard, P.W., et al. J. Biol. Chem. 275(18):13336-13342(2000)