

Anti-Cofilin Antibody
Catalog # AP53892**Specification****Anti-Cofilin Antibody - Product Information**

Application	WB, IF
Primary Accession	P23528
Other Accession	Q9Y281
Reactivity	Human, Mouse, Rat
Host	Rabbit
Clonality	Polyclonal
Calculated MW	18502

Anti-Cofilin Antibody - Additional Information**Gene ID** 1072**Other Names**

CFL1; CFL; Cofilin-1; 18 kDa phosphoprotein; p18; Cofilin, non-muscle isoform; CFL2; Cofilin-2; Cofilin, muscle isoform

Target/Specificity

KLH-conjugated synthetic peptide encompassing a sequence within the center region of human Cofilin. The exact sequence is proprietary.

Dilution

WB~~1/500 - 1/1000

IF~~1/50 - 1/200

Format

Liquid in 0.42% Potassium phosphate, 0.87% Sodium chloride, pH 7.3, 30% glycerol, and 0.09% (W/V) sodium azide.

Storage

Store at -20 °C. Stable for 12 months from date of receipt

Anti-Cofilin Antibody - Protein Information**Name** CFL1**Synonyms** CFL**Function**

Binds to F-actin and exhibits pH-sensitive F-actin depolymerizing activity (PubMed:11812157). In conjunction with the subcortical maternal complex (SCMC), plays an essential role for zygotes to progress beyond the first embryonic cell divisions via regulation of actin dynamics (PubMed:15580268). Required for

the centralization of the mitotic spindle and symmetric division of zygotes (By similarity). Plays a role in the regulation of cell morphology and cytoskeletal organization in epithelial cells (PubMed:21834987). Required for the up-regulation of atypical chemokine receptor ACKR2 from endosomal compartment to cell membrane, increasing its efficiency in chemokine uptake and degradation (PubMed:23633677). Required for neural tube morphogenesis and neural crest cell migration (By similarity).

Cellular Location

Nucleus matrix. Cytoplasm, cytoskeleton. Cell projection, ruffle membrane; Peripheral membrane protein; Cytoplasmic side. Cell projection, lamellipodium membrane; Peripheral membrane protein; Cytoplasmic side. Cell projection, lamellipodium {ECO:0000250|UniProtKB:P18760}. Cell projection, growth cone {ECO:0000250|UniProtKB:P18760}. Cell projection, axon {ECO:0000250|UniProtKB:P18760}. Note=Colocalizes with the actin cytoskeleton in membrane ruffles and lamellipodia. Detected at the cleavage furrow and contractile ring during cytokinesis. Almost completely in nucleus in cells exposed to heat shock or 10% dimethyl sulfoxide

Tissue Location

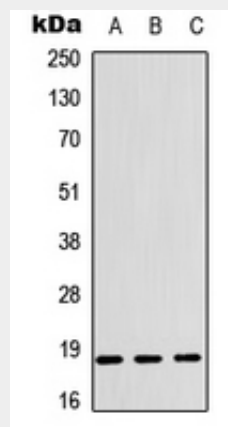
Widely distributed in various tissues.

Anti-Cofilin Antibody - Protocols

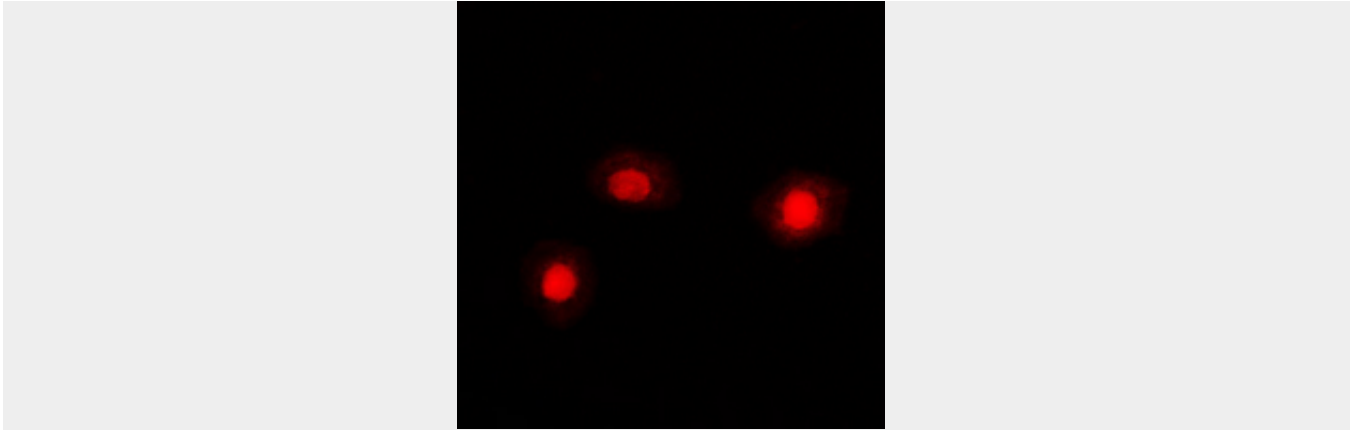
Provided below are standard protocols that you may find useful for product applications.

- [Western Blot](#)
- [Blocking Peptides](#)
- [Dot Blot](#)
- [Immunohistochemistry](#)
- [Immunofluorescence](#)
- [Immunoprecipitation](#)
- [Flow Cytometry](#)
- [Cell Culture](#)

Anti-Cofilin Antibody - Images



Western blot analysis of Cofilin expression in K562 (A), SHSY5Y (B), rat muscle (C) whole cell lysates.



Immunofluorescent analysis of Cofilin staining in K562 cells. Formalin-fixed cells were permeabilized with 0.1% Triton X-100 in TBS for 5-10 minutes and blocked with 3% BSA-PBS for 30 minutes at room temperature. Cells were probed with the primary antibody in 3% BSA-PBS and incubated overnight at 4 °C in a humidified chamber. Cells were washed with PBST and incubated with a DyLight 594-conjugated secondary antibody (red) in PBS at room temperature in the dark.

Anti-Cofilin Antibody - Background

Rabbit polyclonal antibody to Cofilin

Anti-Cofilin Antibody - Citations

- [Linoleic acid improves PIEZO2 dysfunction in a mouse model of Angelman Syndrome](#)