

Anti-Collagen 18 alpha 1 Antibody
Catalog # AP53893**Specification**

Anti-Collagen 18 alpha 1 Antibody - Product Information

Application	WB, IF, IHC
Primary Accession	P39060
Reactivity	Human
Host	Rabbit
Clonality	Polyclonal
Calculated MW	178188

Anti-Collagen 18 alpha 1 Antibody - Additional Information**Gene ID** 80781**Other Names**

Collagen alpha-1(XVIII) chain

Target/Specificity

KLH-conjugated synthetic peptide encompassing a sequence within the center region of human Collagen 18 alpha 1. The exact sequence is proprietary.

Dilution

WB~~1/500 - 1/1000

IF~~1/50 - 1/200

IHC~~1:100~500

Format

Liquid in 0.42% Potassium phosphate, 0.87% Sodium chloride, pH 7.3, 30% glycerol, and 0.09% (W/V) sodium azide.

Storage

Store at -20 °C. Stable for 12 months from date of receipt

Anti-Collagen 18 alpha 1 Antibody - Protein Information**Name** COL18A1 ([HGNC:2195](#))**Function**

Probably plays a major role in determining the retinal structure as well as in the closure of the neural tube.

Cellular Location

Secreted, extracellular space, extracellular matrix. Secreted, extracellular space, extracellular matrix, basement membrane {ECO:0000250|UniProtKB:P39061} [Endostatin]: Secreted. Secreted, extracellular space, extracellular matrix, basement membrane

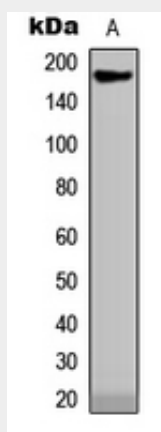
Tissue Location

Detected in placenta (at protein level) (PubMed:32337544). Present in multiple organs with highest levels in liver, lung and kidney.

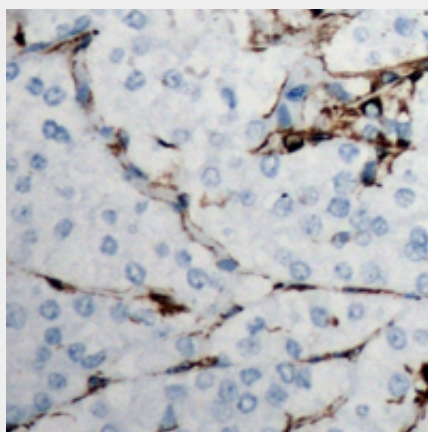
Anti-Collagen 18 alpha 1 Antibody - Protocols

Provided below are standard protocols that you may find useful for product applications.

- [Western Blot](#)
- [Blocking Peptides](#)
- [Dot Blot](#)
- [Immunohistochemistry](#)
- [Immunofluorescence](#)
- [Immunoprecipitation](#)
- [Flow Cytometry](#)
- [Cell Culture](#)

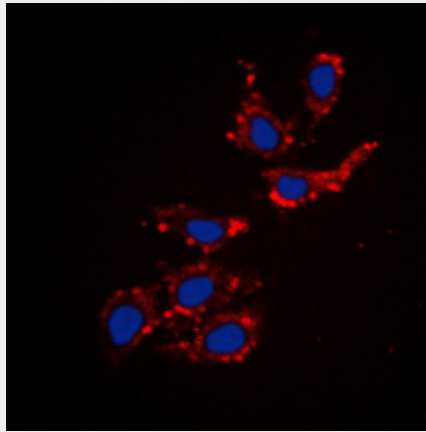
Anti-Collagen 18 alpha 1 Antibody - Images

Western blot analysis of Collagen 18 alpha 1 expression in MCF7 (A) whole cell lysates.



Immunohistochemical analysis of Collagen 18 alpha 1 staining in human breast cancer formalin fixed paraffin embedded tissue section. The section was pre-treated using heat mediated antigen retrieval with sodium citrate buffer (pH 6.0). The section was then incubated with the antibody at room temperature and detected using an HRP conjugated compact polymer system. DAB was used as the chromogen. The section was then counterstained with haematoxylin and mounted

with DPX.



Immunofluorescent analysis of Collagen 18 alpha 1 staining in MCF7 cells. Formalin-fixed cells were permeabilized with 0.1% Triton X-100 in TBS for 5-10 minutes and blocked with 3% BSA-PBS for 30 minutes at room temperature. Cells were probed with the primary antibody in 3% BSA-PBS and incubated overnight at 4 °C in a humidified chamber. Cells were washed with PBST and incubated with a DyLight 594-conjugated secondary antibody (red) in PBS at room temperature in the dark. DAPI was used to stain the cell nuclei (blue).

Anti-Collagen 18 alpha 1 Antibody - Background

Rabbit polyclonal antibody to Collagen 18 alpha 1

Anti-Collagen 18 alpha 1 Antibody - Citations

- [Discovery of IgG4 Anti-Gliadin Autoantibody as a Potential Biomarker of Psoriasis Using an Autoantigen Array](#)