

Anti-DNA Polymerase zeta Antibody
Catalog # AP53897**Specification**

Anti-DNA Polymerase zeta Antibody - Product Information

Application	WB, IF, IHC
Primary Accession	O60673
Reactivity	Human, Mouse, Rat
Host	Rabbit
Clonality	Polyclonal
Calculated MW	352776

Anti-DNA Polymerase zeta Antibody - Additional Information**Gene ID** 5980**Other Names**

POLZ; REV3; DNA polymerase zeta catalytic subunit; Protein reversionless 3-like; REV3-like; hREV3

Target/Specificity

KLH-conjugated synthetic peptide encompassing a sequence within the N-term region of human DNA Polymerase zeta. The exact sequence is proprietary.

Dilution

WB~~1/500 - 1/1000

IF~~1/50 - 1/200

IHC~~1:100~500

Format

Liquid in 0.42% Potassium phosphate, 0.87% Sodium chloride, pH 7.3, 30% glycerol, and 0.09% (W/V) sodium azide.

Storage

Store at -20 °C.Stable for 12 months from date of receipt

Anti-DNA Polymerase zeta Antibody - Protein Information**Name** REV3L**Synonyms** POLZ, REV3**Function**

Catalytic subunit of the DNA polymerase zeta complex, an error-prone polymerase specialized in translesion DNA synthesis (TLS). Lacks an intrinsic 3'-5' exonuclease activity and thus has no proofreading function.

Cellular Location

Nucleus.

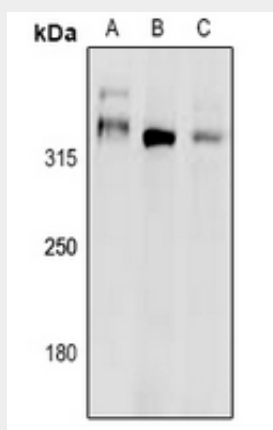
Tissue Location

Ubiquitously expressed.

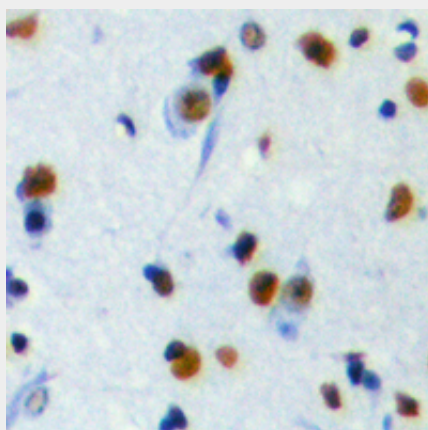
Anti-DNA Polymerase zeta Antibody - Protocols

Provided below are standard protocols that you may find useful for product applications.

- [Western Blot](#)
- [Blocking Peptides](#)
- [Dot Blot](#)
- [Immunohistochemistry](#)
- [Immunofluorescence](#)
- [Immunoprecipitation](#)
- [Flow Cytometry](#)
- [Cell Culture](#)

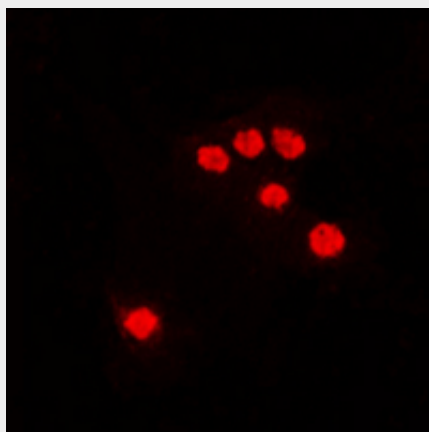
Anti-DNA Polymerase zeta Antibody - Images

Western blot analysis of DNA Polymerase zeta expression in rat lung (A), mouse kidney (B), H1792 (C) whole cell lysates.



Immunohistochemical analysis of DNA Polymerase zeta staining in human brain formalin fixed paraffin embedded tissue section. The section was pre-treated using heat mediated antigen retrieval with sodium citrate buffer (pH 6.0). The section was then incubated with the antibody at room temperature and detected using an HRP conjugated compact polymer system. DAB was used as the chromogen. The section was then counterstained with haematoxylin and mounted

with DPX.



Immunofluorescent analysis of DNA Polymerase zeta staining in HEK293T cells. Formalin-fixed cells were permeabilized with 0.1% Triton X-100 in TBS for 5-10 minutes and blocked with 3% BSA-PBS for 30 minutes at room temperature. Cells were probed with the primary antibody in 3% BSA-PBS and incubated overnight at 4 °C in a humidified chamber. Cells were washed with PBST and incubated with a DyLight 594-conjugated secondary antibody (red) in PBS at room temperature in the dark.

Anti-DNA Polymerase zeta Antibody - Background

Rabbit polyclonal antibody to DNA Polymerase zeta