

Anti-SSTR4 Antibody
Catalog # AP53899**Specification**

Anti-SSTR4 Antibody - Product Information

Application	WB
Primary Accession	P31391
Reactivity	Human, Mouse, Rat
Host	Rabbit
Clonality	Polyclonal
Calculated MW	42003

Anti-SSTR4 Antibody - Additional Information**Gene ID** 6754**Other Names**

Somatostatin receptor type 4; SS-4-R; SS4-R; SS4R

Target/Specificity

KLH-conjugated synthetic peptide encompassing a sequence within the center region of human SSTR4. The exact sequence is proprietary.

Dilution

WB~~1/500 - 1/1000

Format

Liquid in 0.42% Potassium phosphate, 0.87% Sodium chloride, pH 7.3, 30% glycerol, and 0.09% (W/V) sodium azide.

Storage

Store at -20 °C.Stable for 12 months from date of receipt

Anti-SSTR4 Antibody - Protein Information**Name** SSTR4**Function**

Receptor for somatostatin-14. The activity of this receptor is mediated by G proteins which inhibits adenylyl cyclase. It is functionally coupled not only to inhibition of adenylyl cyclase, but also to activation of both arachidonate release and mitogen-activated protein (MAP) kinase cascade. Mediates antiproliferative action of somatostatin in tumor cells.

Cellular Location

Cell membrane; Multi-pass membrane protein.

Tissue Location

Specifically expressed in fetal and adult brain, lung tissue, stomach, and in lesser quantities in the

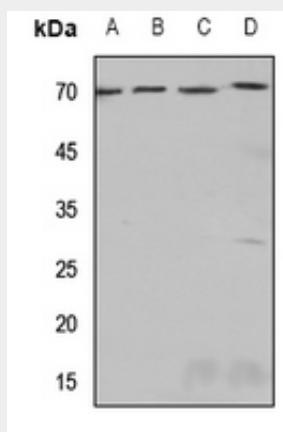
kidney, pituitary and adrenals

Anti-SSTR4 Antibody - Protocols

Provided below are standard protocols that you may find useful for product applications.

- [Western Blot](#)
- [Blocking Peptides](#)
- [Dot Blot](#)
- [Immunohistochemistry](#)
- [Immunofluorescence](#)
- [Immunoprecipitation](#)
- [Flow Cytometry](#)
- [Cell Culture](#)

Anti-SSTR4 Antibody - Images



Western blot analysis of SSTR4 expression in mouse brain (A), mouse lung (B), mouse kidney (C), rat kidney (D) whole cell lysates.

Anti-SSTR4 Antibody - Background

Rabbit polyclonal antibody to SSTR4