

Anti-IFIT5 Antibody
Catalog # AP53904**Specification**

Anti-IFIT5 Antibody - Product Information

Application	WB
Primary Accession	Q13325
Reactivity	Human, Mouse
Host	Rabbit
Clonality	Polyclonal
Calculated MW	55847

Anti-IFIT5 Antibody - Additional Information**Gene ID** 24138**Other Names**

ISG58; RI58; Interferon-induced protein with tetratricopeptide repeats 5; IFIT-5; Interferon-induced 58 kDa protein; Retinoic acid- and interferon-inducible 58 kDa protein; P58

Target/Specificity

Recognizes endogenous levels of IFIT5 protein.

Dilution

WB~~1/500 - 1/1000

Format

Liquid in 0.42% Potassium phosphate, 0.87% Sodium chloride, pH 7.3, 30% glycerol, and 0.09% (W/V) sodium azide.

Storage

Store at -20 °C.Stable for 12 months from date of receipt

Anti-IFIT5 Antibody - Protein Information**Name** IFIT5**Synonyms** ISG58, RI58**Function**

Interferon-induced RNA-binding protein involved in the human innate immune response. Has a broad and adaptable RNA structure recognition important for RNA recognition specificity in antiviral defense. Binds precursor and processed tRNAs as well as poly-U-tailed tRNA fragments (PubMed:23317505, PubMed:23774268, PubMed:25092312). Specifically binds single-stranded RNA bearing a 5'-triphosphate group (PPP-RNA), thereby acting as a sensor of viral single-stranded RNAs. Single-stranded PPP-RNAs, which lack 2'-O-methylation

of the 5' cap and bear a 5'-triphosphate group instead, are specific from viruses, providing a molecular signature to distinguish between self and non- self mRNAs by the host during viral infection. Directly binds PPP-RNA in a non-sequence-specific manner (PubMed:23334420). Also recognizes and selectively binds AT-rich dsDNA (PubMed:23774268). Additionally, as a mediator in innate immunity, positively regulates IKK-NFκB signaling by synergizing the recruitment of IKK to MAP3K7 (PubMed:26334375).

Cellular Location

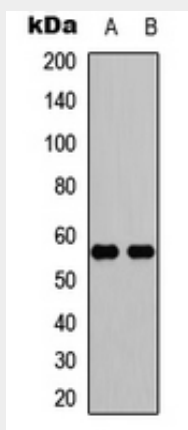
Cell projection, ruffle membrane. Note=Colocalized with RIGI at cell surface ruffles. Localizes to actin-rich protrusions from the apical cell surface

Anti-IFIT5 Antibody - Protocols

Provided below are standard protocols that you may find useful for product applications.

- [Western Blot](#)
- [Blocking Peptides](#)
- [Dot Blot](#)
- [Immunohistochemistry](#)
- [Immunofluorescence](#)
- [Immunoprecipitation](#)
- [Flow Cytometry](#)
- [Cell Culture](#)

Anti-IFIT5 Antibody - Images



Western blot analysis of IFIT5 expression in Jurkat (A), mouse lung (B) whole cell lysates.

Anti-IFIT5 Antibody - Background

Rabbit polyclonal antibody to IFIT5