

Anti-NRBP1 Antibody
Catalog # AP53907**Specification**

Anti-NRBP1 Antibody - Product Information

Application	WB
Primary Accession	Q9UHY1
Reactivity	Human, Mouse
Host	Rabbit
Clonality	Polyclonal
Calculated MW	59845

Anti-NRBP1 Antibody - Additional Information**Gene ID** 29959**Other Names**

BCON3; NRBP; Nuclear receptor-binding protein

Target/Specificity

Recognizes endogenous levels of NRBP1 protein.

Dilution

WB~~1/500 - 1/1000

Format

Liquid in 0.42% Potassium phosphate, 0.87% Sodium chloride, pH 7.3, 30% glycerol, and 0.09% (W/V) sodium azide.

Storage

Store at -20 °C.Stable for 12 months from date of receipt

Anti-NRBP1 Antibody - Protein Information**Name** NRBP1**Synonyms** BCON3 {ECO:0000312|EMBL:AAF21967.1}, NRB**Function**

Required for embryonic development (By similarity). Plays a role in intestinal epithelial cell fate and proliferation, thereby involved in the architectural development of the intestine potentially via the regulation of Wnt-responsive genes (By similarity). May play a role in subcellular trafficking between the endoplasmic reticulum and Golgi apparatus through interactions with the Rho-type GTPases (PubMed:11956649). Binding to the NS3 protein of dengue virus type 2 appears to subvert this activity into the alteration of the intracellular membrane structure associated with flaviviral replication (PubMed:15084397).

Cellular Location

Cytoplasm, cell cortex. Endomembrane system. Cell projection, lamellipodium. Note=Colocalizes with activated RAC3 to endomembranes and at the cell periphery in lamellipodia

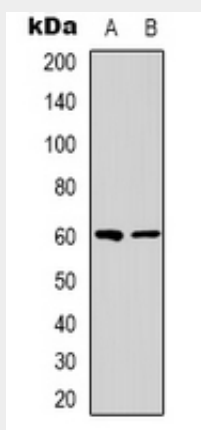
Tissue Location

Ubiquitously expressed in all tissues examined with high levels in the testis.

Anti-NRBP1 Antibody - Protocols

Provided below are standard protocols that you may find useful for product applications.

- [Western Blot](#)
- [Blocking Peptides](#)
- [Dot Blot](#)
- [Immunohistochemistry](#)
- [Immunofluorescence](#)
- [Immunoprecipitation](#)
- [Flow Cytometry](#)
- [Cell Culture](#)

Anti-NRBP1 Antibody - Images

Western blot analysis of NRBP1 expression in Jurkat (A), HepG2 (B) whole cell lysates.

Anti-NRBP1 Antibody - Background

Rabbit polyclonal antibody to NRBP1