

Anti-CDC42EP4 Antibody
Catalog # AP53918**Specification**

Anti-CDC42EP4 Antibody - Product Information

Application	WB, IH
Primary Accession	Q9H3Q1
Reactivity	Human, Rat
Host	Rabbit
Clonality	Polyclonal
Calculated MW	37980

Anti-CDC42EP4 Antibody - Additional Information**Gene ID** 23580**Other Names**

BORG4; CEP4; Cdc42 effector protein 4; Binder of Rho GTPases 4

Target/Specificity

Recognizes endogenous levels of CDC42EP4 protein.

Dilution

WB~~1/500 - 1/1000

IH~~1/50 - 1/200

Format

Liquid in 0.42% Potassium phosphate, 0.87% Sodium chloride, pH 7.3, 30% glycerol, and 0.09% (W/V) sodium azide.

Storage

Store at -20 °C.Stable for 12 months from date of receipt

Anti-CDC42EP4 Antibody - Protein Information**Name** CDC42EP4**Synonyms** BORG4, CEP4**Function**

Probably involved in the organization of the actin cytoskeleton. May act downstream of CDC42 to induce actin filament assembly leading to cell shape changes. Induces pseudopodia formation, when overexpressed in fibroblasts.

Cellular Location

Endomembrane system; Peripheral membrane protein. Cytoplasm, cytoskeleton

Tissue Location

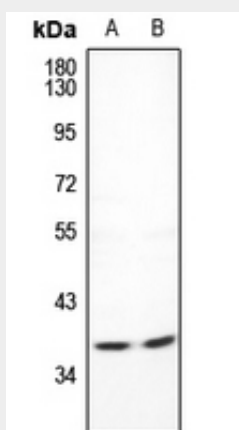
Not detected in any of the adult tissues tested. May be expressed only in fetal or embryonic tissues

Anti-CDC42EP4 Antibody - Protocols

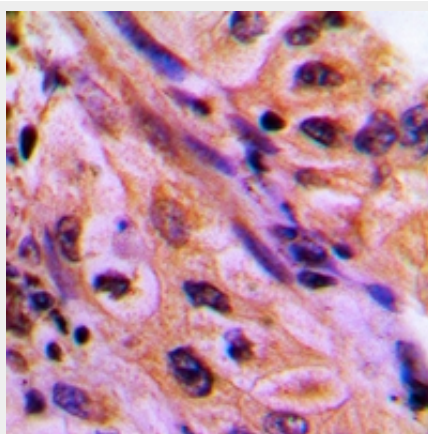
Provided below are standard protocols that you may find useful for product applications.

- [Western Blot](#)
- [Blocking Peptides](#)
- [Dot Blot](#)
- [Immunohistochemistry](#)
- [Immunofluorescence](#)
- [Immunoprecipitation](#)
- [Flow Cytometry](#)
- [Cell Culture](#)

Anti-CDC42EP4 Antibody - Images



Western blot analysis of CDC42EP4 expression in HeLa (A), PC12 (B) whole cell lysates.



Immunohistochemical analysis of CDC42EP4 staining in human lung cancer formalin fixed paraffin embedded tissue section. The section was pre-treated using heat mediated antigen retrieval with sodium citrate buffer (pH 6.0). The section was then incubated with the antibody at room temperature and detected using an HRP conjugated compact polymer system. DAB was used as the chromogen. The section was then counterstained with haematoxylin and mounted with DPX.

Anti-CDC42EP4 Antibody - Background

Rabbit polyclonal antibody to CDC42EP4