

Anti-MCT12 Antibody
Catalog # AP53919**Specification**

Anti-MCT12 Antibody - Product Information

Application	WB, IHC
Primary Accession	Q6ZSM3
Reactivity	Human, Mouse
Host	Rabbit
Clonality	Polyclonal
Calculated MW	56498

Anti-MCT12 Antibody - Additional Information**Gene ID** 387700**Other Names**

MCT12; Monocarboxylate transporter 12; MCT 12; Solute carrier family 16 member 12

Target/Specificity

Recognizes endogenous levels of MCT12 protein.

Dilution

WB~~1/500 - 1/1000

IHC~~1:100~500

Format

Liquid in 0.42% Potassium phosphate, 0.87% Sodium chloride, pH 7.3, 30% glycerol, and 0.09% (W/V) sodium azide.

Storage

Store at -20 °C.Stable for 12 months from date of receipt

Anti-MCT12 Antibody - Protein Information**Name** SLC16A12 ([HGNC:23094](#))**Function**

Functions as a transporter for creatine and as well for its precursor guanidinoacetate. Transport of creatine and GAA is independent of resting membrane potential and extracellular Na(+), Cl(-), or pH. Contributes to the process of creatine biosynthesis and distribution.

Cellular Location

Cell membrane; Multi-pass membrane protein. Basolateral cell membrane {ECO:0000250|UniProtKB:Q8BGC3}; Multi-pass membrane protein. Note=Interaction with isoform 2 of BSG is required for its localization to the plasma membrane.

Tissue Location

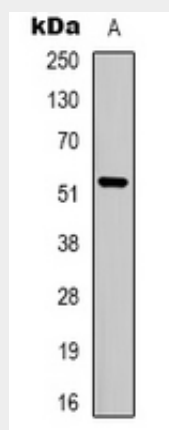
Most highly expressed in kidney, followed by retina, lung, heart and testis. Very weakly expressed in brain and liver. Also detected in lens.

Anti-MCT12 Antibody - Protocols

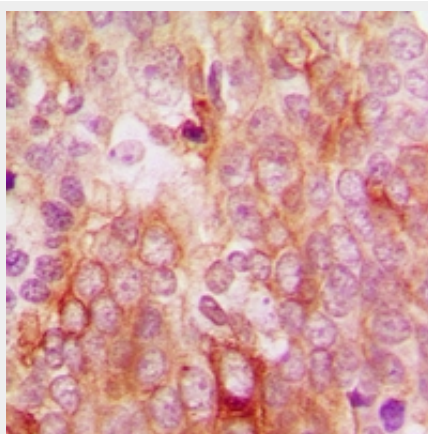
Provided below are standard protocols that you may find useful for product applications.

- [Western Blot](#)
- [Blocking Peptides](#)
- [Dot Blot](#)
- [Immunohistochemistry](#)
- [Immunofluorescence](#)
- [Immunoprecipitation](#)
- [Flow Cytometry](#)
- [Cell Culture](#)

Anti-MCT12 Antibody - Images



Western blot analysis of MCT12 expression in Jurkat (A) whole cell lysates.



Immunohistochemical analysis of MCT12 staining in human breast cancer formalin fixed paraffin embedded tissue section. The section was pre-treated using heat mediated antigen retrieval with sodium citrate buffer (pH 6.0). The section was then incubated with the antibody at room temperature and detected using an HRP conjugated compact polymer system. DAB was used as the chromogen. The section was then counterstained with haematoxylin and mounted with DPX.

Anti-MCT12 Antibody - Background

Rabbit polyclonal antibody to MCT12