

**Anti-PKE Antibody**  
**Catalog # AP53921****Specification**

---

**Anti-PKE Antibody - Product Information**

Application	WB, IH
Primary Accession	<a href="#">Q86UX6</a>
Reactivity	Human, Mouse, Rat
Host	Rabbit
Clonality	Polyclonal
Calculated MW	54994

**Anti-PKE Antibody - Additional Information****Gene ID** 282974**Other Names**

YANK3; Serine/threonine-protein kinase 32C; PKE; Yet another novel kinase 3

**Target/Specificity**

Recognizes endogenous levels of PKE protein.

**Dilution**

WB~~1/500 - 1/1000

IH~~1/50 - 1/200

**Format**

Liquid in 0.42% Potassium phosphate, 0.87% Sodium chloride, pH 7.3, 30% glycerol, and 0.09% (W/V) sodium azide.

**Storage**

Store at -20 °C. Stable for 12 months from date of receipt

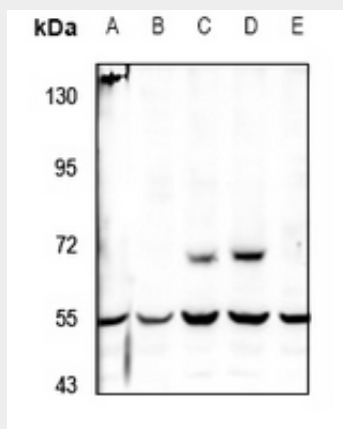
**Anti-PKE Antibody - Protein Information****Name** STK32C {ECO:0000312|EMBL:AAH45760.1}**Synonyms** YANK3**Anti-PKE Antibody - Protocols**

Provided below are standard protocols that you may find useful for product applications.

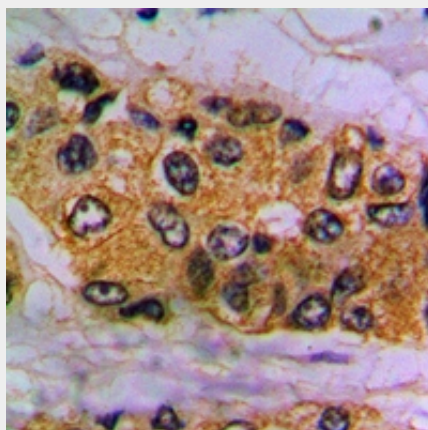
- [Western Blot](#)
- [Blocking Peptides](#)
- [Dot Blot](#)

- [Immunohistochemistry](#)
- [Immunofluorescence](#)
- [Immunoprecipitation](#)
- [Flow Cytometry](#)
- [Cell Culture](#)

#### Anti-PKE Antibody - Images



Western blot analysis of PKE expression in CT26 (A), PC12 (B), HEK293T (C), A549 (D), MCF7 (E) whole cell lysates.



Immunohistochemical analysis of PKE staining in human prostate cancer formalin fixed paraffin embedded tissue section. The section was pre-treated using heat mediated antigen retrieval with sodium citrate buffer (pH 6.0). The section was then incubated with the antibody at room temperature and detected using an HRP conjugated compact polymer system. DAB was used as the chromogen. The section was then counterstained with haematoxylin and mounted with DPX.

#### Anti-PKE Antibody - Background

Rabbit polyclonal antibody to PKE