

**Anti-TBL2 Antibody**  
**Catalog # AP53923****Specification**

---

**Anti-TBL2 Antibody - Product Information**

Application	WB, IH
Primary Accession	<a href="#">Q9Y4P3</a>
Reactivity	Human
Host	Rabbit
Clonality	Polyclonal
Calculated MW	49798

**Anti-TBL2 Antibody - Additional Information****Gene ID** 26608**Other Names**WBSCR13; Transducin beta-like protein 2; WS beta-transducin repeats protein; WS-betaTRP;  
Williams-Beuren syndrome chromosomal region 13 protein**Target/Specificity**

Recognizes endogenous levels of TBL2 protein.

**Dilution**

WB~~1/500 - 1/1000

IH~~1/50 - 1/200

**Format**

Liquid in 0.42% Potassium phosphate, 0.87% Sodium chloride, pH 7.3, 30% glycerol, and 0.09% (W/V) sodium azide.

**Storage**

Store at -20 °C.Stable for 12 months from date of receipt

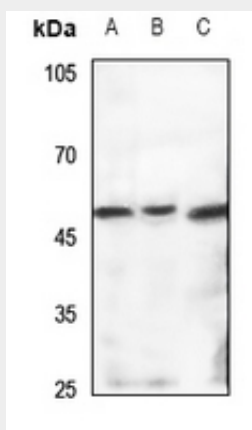
**Anti-TBL2 Antibody - Protein Information****Name** TBL2**Synonyms** WBSCR13**Anti-TBL2 Antibody - Protocols**

Provided below are standard protocols that you may find useful for product applications.

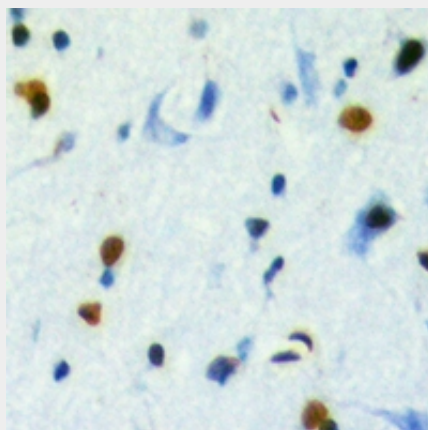
- [Western Blot](#)
- [Blocking Peptides](#)

- [Dot Blot](#)
- [Immunohistochemistry](#)
- [Immunofluorescence](#)
- [Immunoprecipitation](#)
- [Flow Cytometry](#)
- [Cell Culture](#)

#### Anti-TBL2 Antibody - Images



Western blot analysis of TBL2 expression in HEK293T (A), U87MG (B), MCF7 (C) whole cell lysates.



Immunohistochemical analysis of TBL2 staining in human brain formalin fixed paraffin embedded tissue section. The section was pre-treated using heat mediated antigen retrieval with sodium citrate buffer (pH 6.0). The section was then incubated with the antibody at room temperature and detected using an HRP conjugated compact polymer system. DAB was used as the chromogen. The section was then counterstained with haematoxylin and mounted with DPX.

#### Anti-TBL2 Antibody - Background

Rabbit polyclonal antibody to TBL2