

**Anti-SRSF5 Antibody**  
**Catalog # AP53930****Specification**

---

**Anti-SRSF5 Antibody - Product Information**

Application	WB, IH, IF
Primary Accession	<a href="#">Q13243</a>
Reactivity	Human, Mouse, Rat
Host	Rabbit
Clonality	Polyclonal
Calculated MW	31264

**Anti-SRSF5 Antibody - Additional Information****Gene ID** 6430**Other Names**HRS; SFRS5; SRP40; Serine/arginine-rich splicing factor 5; Delayed-early protein HRS;  
Pre-mRNA-splicing factor SRP40; Splicing factor, arginine/serine-rich 5**Target/Specificity**

Recognizes endogenous levels of SRSF5 protein.

**Dilution**

WB~~1/500 - 1/2000

IH~~1/50 - 1/200

IF~~1/50 - 1/100

**Format**

Liquid in 0.42% Potassium phosphate, 0.87% Sodium chloride, pH 7.3, 30% glycerol, and 0.09% (W/V) sodium azide.

**Storage**

Store at -20 °C.Stable for 12 months from date of receipt

**Anti-SRSF5 Antibody - Protein Information****Name** SRSF5**Synonyms** HRS, SFRS5, SRP40**Function**

Plays a role in constitutive splicing and can modulate the selection of alternative splice sites.

**Cellular Location**

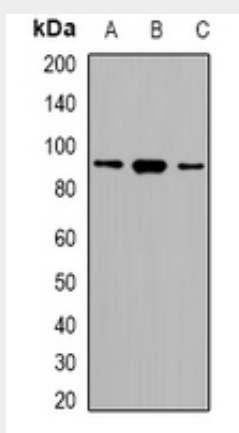
Nucleus.

## Anti-SRSF5 Antibody - Protocols

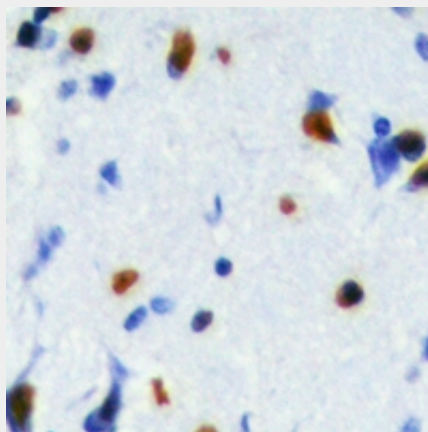
Provided below are standard protocols that you may find useful for product applications.

- [Western Blot](#)
- [Blocking Peptides](#)
- [Dot Blot](#)
- [Immunohistochemistry](#)
- [Immunofluorescence](#)
- [Immunoprecipitation](#)
- [Flow Cytometry](#)
- [Cell Culture](#)

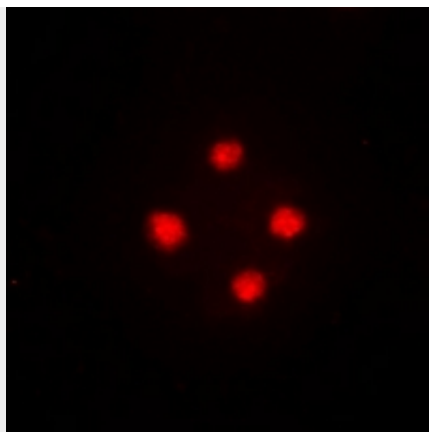
## Anti-SRSF5 Antibody - Images



Western blot analysis of SRSF5 expression in HeLa (A), RAW264.7 (B), H9C2 (C) whole cell lysates.



Immunohistochemical analysis of SRSF5 staining in human brain formalin fixed paraffin embedded tissue section. The section was pre-treated using heat mediated antigen retrieval with sodium citrate buffer (pH 6.0). The section was then incubated with the antibody at room temperature and detected using an HRP conjugated compact polymer system. DAB was used as the chromogen. The section was then counterstained with haematoxylin and mounted with DPX.



Immunofluorescent analysis of SRSF5 staining in HeLa cells. Formalin-fixed cells were permeabilized with 0.1% Triton X-100 in TBS for 5-10 minutes and blocked with 3% BSA-PBS for 30 minutes at room temperature. Cells were probed with the primary antibody in 3% BSA-PBS and incubated overnight at 4 °C in a humidified chamber. Cells were washed with PBST and incubated with a DyLight 594-conjugated secondary antibody (red) in PBS at room temperature in the dark.

**Anti-SRSF5 Antibody - Background**

Rabbit polyclonal antibody to SRSF5