

Anti-ZNF600 Antibody
Catalog # AP53935**Specification**

Anti-ZNF600 Antibody - Product Information

Application	WB, IH
Primary Accession	Q6ZNG1
Reactivity	Human, Mouse, Rat
Host	Rabbit
Clonality	Polyclonal
Calculated MW	83124

Anti-ZNF600 Antibody - Additional Information**Gene ID** 162966**Other Names**

Zinc finger protein 600

Target/Specificity

Recognizes endogenous levels of ZNF600 protein.

Dilution

WB~~1/500 - 1/2000

IH~~1/50 - 1/200

Format

Liquid in 0.42% Potassium phosphate, 0.87% Sodium chloride, pH 7.3, 30% glycerol, and 0.09% (W/V) sodium azide.

Storage

Store at -20 °C.Stable for 12 months from date of receipt

Anti-ZNF600 Antibody - Protein Information**Name** ZNF600**Function**

May be involved in transcriptional regulation.

Cellular Location

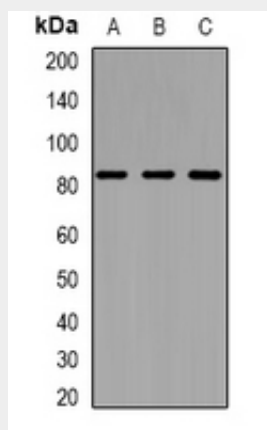
Nucleus.

Anti-ZNF600 Antibody - Protocols

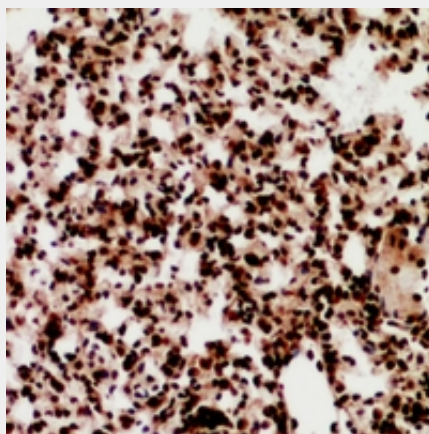
Provided below are standard protocols that you may find useful for product applications.

- [Western Blot](#)
- [Blocking Peptides](#)
- [Dot Blot](#)
- [Immunohistochemistry](#)
- [Immunofluorescence](#)
- [Immunoprecipitation](#)
- [Flow Cytometry](#)
- [Cell Culture](#)

Anti-ZNF600 Antibody - Images



Western blot analysis of ZNF600 expression in MCF7 (A), RAW264.7 (B), H9C2 (C) whole cell lysates.



Immunohistochemical analysis of ZNF600 staining in human lung cancer formalin fixed paraffin embedded tissue section. The section was pre-treated using heat mediated antigen retrieval with sodium citrate buffer (pH 6.0). The section was then incubated with the antibody at room temperature and detected using an HRP conjugated compact polymer system. DAB was used as the chromogen. The section was then counterstained with haematoxylin and mounted with DPX.

Anti-ZNF600 Antibody - Background

Rabbit polyclonal antibody to ZNF600