

**Anti-RRP7A/B Antibody**  
**Catalog # AP53942****Specification**

---

**Anti-RRP7A/B Antibody - Product Information**

Application	<b>WB, IHC</b>
Primary Accession	<a href="#">Q9Y3A4</a>
Other Accession	<a href="#">Q9NSQ0</a>
Reactivity	<b>Human, Mouse, Rat</b>
Host	<b>Rabbit</b>
Clonality	<b>Polyclonal</b>
Calculated MW	<b>32334</b>

**Anti-RRP7A/B Antibody - Additional Information****Gene ID** 27341**Other Names**

RRP7A; CGI-96; Ribosomal RNA-processing protein 7 homolog A; Gastric cancer antigen Zg14; RRP7B; Putative ribosomal RNA-processing protein 7 homolog B; Putative gastric cancer antigen Zg14-like protein

**Target/Specificity**

KLH-conjugated synthetic peptide encompassing a sequence within the C-term region of human RRP7A/B. The exact sequence is proprietary.

**Dilution**

WB~~1/500 - 1/2000

IHC~~1:100~500

**Format**

Liquid in 0.42% Potassium phosphate, 0.87% Sodium chloride, pH 7.3, 30% glycerol, and 0.09% (W/V) sodium azide.

**Storage**

Store at -20 °C. Stable for 12 months from date of receipt

**Anti-RRP7A/B Antibody - Protein Information****Name** RRP7A ([HGNC:24286](#))**Function**

Nucleolar protein that is involved in ribosomal RNA (rRNA) processing (PubMed: [33199730](http://www.uniprot.org/citations/33199730)). Also plays a role in primary cilia resorption, and cell cycle progression in neurogenesis and neocortex development (PubMed: [33199730](http://www.uniprot.org/citations/33199730)). Part of the small subunit (SSU) processome, first precursor of the small eukaryotic ribosomal subunit. During the assembly of the SSU processome in the

nucleolus, many ribosome biogenesis factors, an RNA chaperone and ribosomal proteins associate with the nascent pre-rRNA and work in concert to generate RNA folding, modifications, rearrangements and cleavage as well as targeted degradation of pre-ribosomal RNA by the RNA exosome (PubMed:<a href="http://www.uniprot.org/citations/34516797" target="\_blank">34516797</a>).

#### Cellular Location

Nucleus, nucleolus. Cell projection, cilium. Cytoplasm, cytoskeleton, microtubule organizing center, centrosome

#### Tissue Location

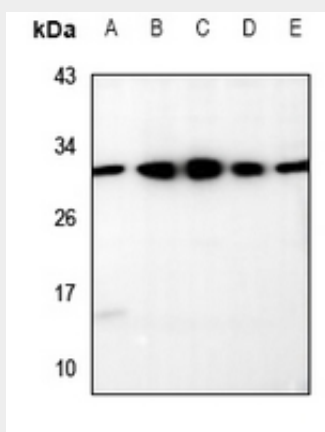
Expressed in the apical radial glial cells in the developing brain.

### Anti-RRP7A/B Antibody - Protocols

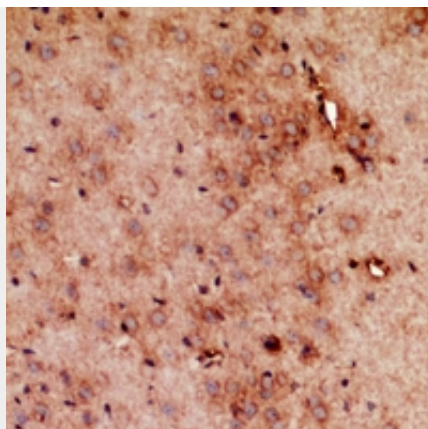
Provided below are standard protocols that you may find useful for product applications.

- [Western Blot](#)
- [Blocking Peptides](#)
- [Dot Blot](#)
- [Immunohistochemistry](#)
- [Immunofluorescence](#)
- [Immunoprecipitation](#)
- [Flow Cytometry](#)
- [Cell Culture](#)

### Anti-RRP7A/B Antibody - Images



Western blot analysis of RRP7A/B expression in CT26 (A), C6 (B), HEK293T (C), A549 (D), MCF7 (E) whole cell lysates.



Immunohistochemical analysis of RRP7A/B staining in mouse brain formalin fixed paraffin embedded tissue section. The section was pre-treated using heat mediated antigen retrieval with sodium citrate buffer (pH 6.0). The section was then incubated with the antibody at room temperature and detected using an HRP conjugated compact polymer system. DAB was used as the chromogen. The section was then counterstained with haematoxylin and mounted with DPX.

**Anti-RRP7A/B Antibody - Background**

Rabbit polyclonal antibody to RRP7A/B