

Anti-CCL5 Antibody
Catalog # AP53947**Specification**

Anti-CCL5 Antibody - Product Information

Application	WB, IHC
Primary Accession	P13501
Reactivity	Human
Host	Rabbit
Clonality	Polyclonal
Calculated MW	9990

Anti-CCL5 Antibody - Additional Information**Gene ID** 6352**Other Names**

D17S136E; SCYA5; C-C motif chemokine 5; EoCP; Eosinophil chemotactic cytokine; SIS-delta; Small-inducible cytokine A5; T cell-specific protein P228; TCP228; T-cell-specific protein RANTES

Target/Specificity

Recognizes endogenous levels of CCL5 protein.

Dilution

WB~~1/500 - 1/1000

IHC~~1:100~500

Format

Liquid in 0.42% Potassium phosphate, 0.87% Sodium chloride, pH 7.3, 30% glycerol, and 0.09% (W/V) sodium azide.

Storage

Store at -20 °C.Stable for 12 months from date of receipt

Anti-CCL5 Antibody - Protein Information**Name** CCL5**Synonyms** D17S136E, SCYA5**Function**

Chemoattractant for blood monocytes, memory T-helper cells and eosinophils. Causes the release of histamine from basophils and activates eosinophils. May activate several chemokine receptors including CCR1, CCR3, CCR4 and CCR5. One of the major HIV-suppressive factors produced by CD8+ T-cells. Recombinant RANTES protein induces a dose-dependent inhibition of different strains of HIV-1, HIV-2, and simian immunodeficiency virus (SIV). The processed form RANTES(3-68) acts as a natural chemotaxis inhibitor and is a more potent inhibitor of HIV-1-infection. The second processed form RANTES(4-68) exhibits reduced chemotactic and

HIV-suppressive activity compared with RANTES(1-68) and RANTES(3-68) (PubMed:1380064, PubMed:15923218, PubMed:16791620, PubMed:8525373, PubMed:9516414). May also be an agonist of the G protein-coupled receptor GPR75, stimulating inositol trisphosphate production and calcium mobilization through its activation. Together with GPR75, may play a role in neuron survival through activation of a downstream signaling pathway involving the PI3, Akt and MAP kinases. By activating GPR75 may also play a role in insulin secretion by islet cells (PubMed:23979485).

Cellular Location

Secreted.

Tissue Location

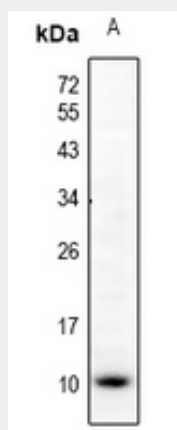
Expressed in the follicular fluid (at protein level). T-cell and macrophage specific.

Anti-CCL5 Antibody - Protocols

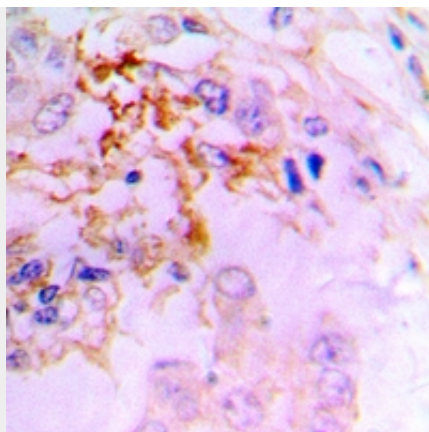
Provided below are standard protocols that you may find useful for product applications.

- [Western Blot](#)
- [Blocking Peptides](#)
- [Dot Blot](#)
- [Immunohistochemistry](#)
- [Immunofluorescence](#)
- [Immunoprecipitation](#)
- [Flow Cytometry](#)
- [Cell Culture](#)

Anti-CCL5 Antibody - Images



Western blot analysis of CCL5 expression in Jurkat (A) whole cell lysates.



Immunohistochemical analysis of CCL5 staining in human lung cancer formalin fixed paraffin embedded tissue section. The section was pre-treated using heat mediated antigen retrieval with sodium citrate buffer (pH 6.0). The section was then incubated with the antibody at room temperature and detected using an HRP conjugated compact polymer system. DAB was used as the chromogen. The section was then counterstained with haematoxylin and mounted with DPX.

Anti-CCL5 Antibody - Background

Rabbit polyclonal antibody to CCL5