

**Anti-GPRC5D Antibody**  
**Catalog # AP53954****Specification**

---

**Anti-GPRC5D Antibody - Product Information**

|                   |                        |
|-------------------|------------------------|
| Application       | WB, IF                 |
| Primary Accession | <a href="#">Q9NZD1</a> |
| Reactivity        | Human, Mouse, Rat      |
| Host              | Rabbit                 |
| Clonality         | Polyclonal             |
| Calculated MW     | 38791                  |

**Anti-GPRC5D Antibody - Additional Information****Gene ID** 55507**Other Names**

G-protein coupled receptor family C group 5 member D

**Target/Specificity**

Recognizes endogenous levels of GPRC5D protein.

**Dilution**

WB~~1/500 - 1/1000

IF~~1/50 - 1/200

**Format**

Liquid in 0.42% Potassium phosphate, 0.87% Sodium chloride, pH 7.3, 30% glycerol, and 0.09% (W/V) sodium azide.

**Storage**

Store at -20 °C.Stable for 12 months from date of receipt

**Anti-GPRC5D Antibody - Protein Information****Name** GPRC5D**Cellular Location**

Cell membrane; Multi-pass membrane protein

**Tissue Location**

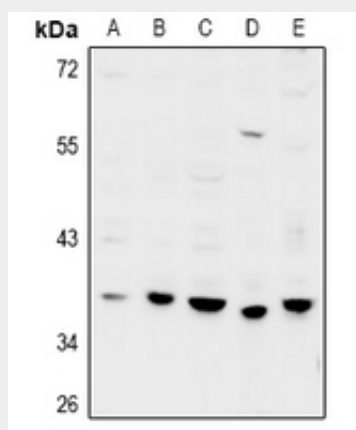
Widely expressed in the peripheral system. Expression pattern is high in pancreas, medium in kidney, small intestine, spleen and testis, low in lung, colon, leukocyte, prostate and thymus and not detectable in brain, heart, liver, placenta, skeletal muscle and ovary.

**Anti-GPRC5D Antibody - Protocols**

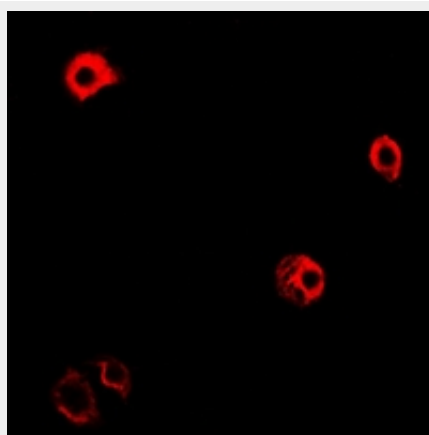
Provided below are standard protocols that you may find useful for product applications.

- [Western Blot](#)
- [Blocking Peptides](#)
- [Dot Blot](#)
- [Immunohistochemistry](#)
- [Immunofluorescence](#)
- [Immunoprecipitation](#)
- [Flow Cytometry](#)
- [Cell Culture](#)

#### Anti-GPRC5D Antibody - Images



Western blot analysis of GPRC5D expression in MCF7 (A), SGC7901 (B), Panc1 (C), CT26 (D), PC12 (E) whole cell lysates.



Immunofluorescent analysis of GPRC5D staining in MCF7 cells. Formalin-fixed cells were permeabilized with 0.1% Triton X-100 in TBS for 5-10 minutes and blocked with 3% BSA-PBS for 30 minutes at room temperature. Cells were probed with the primary antibody in 3% BSA-PBS and incubated overnight at 4 °C in a humidified chamber. Cells were washed with PBST and incubated with Alexa Fluor 647-conjugated secondary antibody (red) in PBS at room temperature in the dark.

#### Anti-GPRC5D Antibody - Background

Rabbit polyclonal antibody to GPRC5D