

**Anti-TAFI Antibody**  
**Catalog # AP53961****Specification**

---

**Anti-TAFI Antibody - Product Information**

Application	WB
Primary Accession	<a href="#">Q96IY4</a>
Reactivity	Human, Mouse, Rat
Host	Rabbit
Clonality	Polyclonal
Calculated MW	48424

**Anti-TAFI Antibody - Additional Information****Gene ID** 1361**Other Names**

Carboxypeptidase B2; Carboxypeptidase U; CPU; Plasma carboxypeptidase B; pCPB;  
Thrombin-activable fibrinolysis inhibitor; TAFI

**Target/Specificity**

Recognizes endogenous levels of TAFI protein.

**Dilution**

WB~~1/500 - 1/1000

**Format**

Liquid in 0.42% Potassium phosphate, 0.87% Sodium chloride, pH 7.3, 30% glycerol, and 0.09% (W/V) sodium azide.

**Storage**

Store at -20 °C.Stable for 12 months from date of receipt

**Anti-TAFI Antibody - Protein Information****Name** CPB2**Function**

Cleaves C-terminal arginine or lysine residues from biologically active peptides such as kinins or anaphylatoxins in the circulation thereby regulating their activities. Down-regulates fibrinolysis by removing C-terminal lysine residues from fibrin that has already been partially degraded by plasmin.

**Cellular Location**

Secreted.

**Tissue Location**

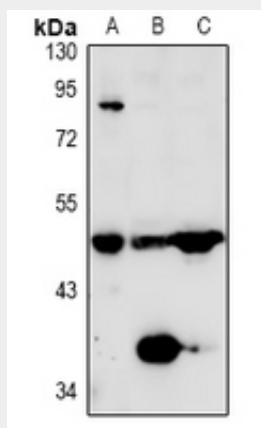
Plasma; synthesized in the liver.

## Anti-TAFI Antibody - Protocols

Provided below are standard protocols that you may find useful for product applications.

- [Western Blot](#)
- [Blocking Peptides](#)
- [Dot Blot](#)
- [Immunohistochemistry](#)
- [Immunofluorescence](#)
- [Immunoprecipitation](#)
- [Flow Cytometry](#)
- [Cell Culture](#)

## Anti-TAFI Antibody - Images



Western blot analysis of TAFI expression in HepG2 (A), mouse liver (B), rat liver (C) whole cell lysates.

## Anti-TAFI Antibody - Background

Rabbit polyclonal antibody to TAFI